

**TECHNICAL MANUAL**

**ORGANIZATIONAL AND DIRECT SUPPORT  
MAINTENANCE REPAIR PARTS AND  
SPECIAL TOOLS LIST  
FOR**

**ANT ENNA GROUP OE-317/TSC-99  
(NSN 5895-01-095-6206)**

TECHNICAL MANUAL

No. 11-5985-362-23P

HEADQUARTERS  
DEPARTMENT OF THE ARMY  
WASHINGTON, DC, 8 June 1984

**ORGANIZATIONAL, AND DIRECT SUPPORT MAINTENANCE**

**REPAIR PARTS AND SPECIAL TOOLS LISTS**

**FOR**

**ANTENNA GROUP OE-317/TSC-99**

**(NSN 5895-01-095-6206)**

**Current as of 21 March 1984**

**REPORTING ERRORS AND RECOMMENDING IMPROVEMENTS**  
You can help improve this manual. If you find any mistakes or if you know of a way to improve the procedures, please let us know. Mail your letter, DA Form 2028 (Recommended Changes to Publications and Blank Forms), or DA Form 2028-2 located in the back of this manual direct to: Commander, US Army Communications-Electronics Command and Fort Monmouth, ATTN: DR-SEL-ME-MP, Fort Monmouth. NJ 07703.  
In either case, a reply will be furnished direct to you.

**Table of Contents**

		Page	Illus Figure
SECTION I.	Introduction .....	1	
	II. Repair Parts List.....	5	
GROUP 00	Antenna Group OE-317/TSC-99 Recorder-Reproducer5 .....	5	1
	01 Antenna AS-3442/TS C-99 .....	11	2
	02 Antenna Support AB-1282/TSC-99.....	17	3
	0201 Top Plate, Mast .....	21	4
	03 Mast Assembly, Light .....	23	5
	0301 Control Box .....	25	6
	030101 Printed Wiring Board .....	27	7
	0302 Remote Photocell.....	29	8
	04 Base Assembly, Tower Winch .....	31	9
	0401 Tower Assembly, Winch .....	33	10
	040101 Winch, Spur Gear 2000 Lbs.....	35	11
	05 Winch Assembly, Feedline.....	37	13
	06 Case, Antenna CY-7865/TSC-99.....	39	14
	07 Case, Mast CY-7866/TSC-99 .....	41	15
	08 Case, Antenna Coupler CY-7867/TSC-99 .....	43	16
	99 Bulk Material .....	44	17
SECTION III.	Special Tools List (Not applicable)		
SECTION IV.	National Stock Number and Part Number Index.....	45	

**\*This manual supersedes TM 11-5895-362-23P, 11 June 1981.**

SECTION I

INTRODUCTION

**1. Scope**

This manual lists spares and repair parts; special tools; special test, measurement, and diagnostic equipment (TM DE), and other special support equipment required for performance of organizational and direct support maintenance of the OE-317/TSC-99. It authorizes the requisitioning and issue of spares and repair parts as indicated by the source and maintenance codes.

**2. General**

This Repair Parts and Special Tools List is divided into the following sections:

a. *Section II. Repair Parts List.* A list of spares and repair parts authorized for use in the performance of maintenance. The list also includes parts which must be removed for replacement of the authorized parts. Parts lists are composed of functional groups in numeric sequence, with the parts in each group listed in figure and item number sequence. Bulk materials are listed at end of Section II.

b. *Section III. Special Tools List.* Not applicable.

c. *Section IV National Stock Number and Part Number Index.* A list, in National item identification number (NIIN) sequence, of all National stock numbers (NSN) appearing in the listings, followed by a list, in alphanumeric sequence, of all part numbers appearing in the listings. National stock numbers and part numbers are cross-referenced to each illustration figure and item number appearance.

**3. Explanation of Columns**

a. *Illustration.* This column is divided as follows:

(1) *Figure number.* Indicates the figure number of the illustration on which the item is shown.

(2) *Item number.* The number used to identify item called out in the illustration.

b. *Source, Maintenance, and Recoverability (SMR) Codes.*

(1) *Source code.* Source codes indicate the manner of acquiring support items for maintenance, repair, or overhaul of end items. Source codes are entered in the first and second positions of the Uniform SMR Code format as follows:

<i>Code</i>	<i>Definition</i>
PA	Item procured and stocked for anticipated or known usage.

<i>Code</i>	<i>Definition</i>
PB	Item procured and stocked for insurance purpose because essentiality dictates that a minimum quantity be available in the supply system.
PC	Item procured and stocked and which other-wise would be coded PA except that it is deteriorative in nature.
PD	Support item, excluding support equipment, procured for initial issue or outfitting and stocked only for subsequent or additional initial issues or outfitting. Not subject to automatic replenishment.
PE	Support equipment procured and stocked for initial issue or outfitting to specified maintenance repair activities.
PF	Support equipment which will not be stocked but which will be centrally procured on demand.
PG	Item procured and stock to provide for sustained support for the life of the equipment. It is applied to an item peculiar to the equipment which, because of probable discontinuance or shutdown of production facilities, would prove uneconomical to reproduce at a later time.
KD	An item of a depot overhaul/repair kit and not purchased separately. Depot kit defined as a kit that provides items required at the time of overhaul or repair.
KF	An item of a maintenance kit and not purchased separately. Maintenance kit defined as a kit that provides an item that can be replaced at organizational or intermediate levels of maintenance.
KB	Item included in both a depot overhaul/repair kit and a maintenance kit.
MO	Item to be manufactured or fabricated at the organizational level.
MF	Item to be manufactured or fabricated at the direct support maintenance level. MH- Item to be manufactured or fabricated at the general support maintenance level. MD- Item to be manufactured or fabricated at the depot maintenance level.
AO	Item to be assembled at organization level. AF- Item to be assembled at direct support maintenance level.

<i>Code</i>	<i>Definition</i>
AH	Item to be assembled at general support maintenance level.
AD	Item to be assembled at depot maintenance level.
XA	Item is not procured or stocked because the requirements for the item will result in the replacement of the next higher assembly. XB- Item is not procured or stocked. If not available through salvage, requisition.
XC	Installation drawing, diagram, instruction sheet, field service drawing, that is identified by manufacturer's part number. XD- A support item that is not stocked. When required, item will be procured through normal supply channels.

**NOTE**

Cannibalization or salvage may be used as a source of supply for any items source coded above except those coded XA and aircraft support items as restricted by AR 750-1.

(2) *Maintenance code.* Maintenance codes are assigned to indicate the levels of maintenance authorized to USE and REPAIR support items. The maintenance codes are entered in the third and fourth positions of the Uniform SMR Code format as follows:

(a) The maintenance code entered in the third position will indicate the lowest maintenance level authorized to remove, replace, and use the support item. The maintenance code entered in the third position will indicate one of the following levels of maintenance:

<i>Code</i>	<i>Application/Explanation</i>
C	Crew or operator maintenance performed within organizational maintenance.
O	Support item is removed, replaced, used at the organizational level.
F	Support item is removed, replaced, used at the direct support level.
H	Support item is removed, replaced, used at the general support level.
D	Support items that are removed, replaced, used at depot, mobile depot, specialized repair activity only.

(b) The maintenance code entered in the fourth positions indicates whether the item is to be repaired and identifies the lowest maintenance level with the capability to perform complete repair (i.e., all authorized maintenance functions). This position will contain one of the following maintenance codes:

<i>Code</i>	<i>Application/Explanation</i>
O	The lowest maintenance level capable of complete repair of the support item is the organizational level.
F	The lowest maintenance level capable of complete repair of the support item is the direct support level.
H	The lowest maintenance level capable of complete repair of the support item is the general support level.
D	The lowest maintenance level capable of complete repair of the support item is the depot level.
L	Repair restricted to designated specialized re-pair activity.
Z	Nonreparable. No repair is authorized. B- No repair is authorized. The item may be reconditioned by adjusting, lubricating, etc., at the user level. No parts or special tools are procured for the maintenance of this item.

(3) *Recoverability code.* Recoverability codes are assigned to support items to indicate the disposition action on unserviceable items. The recoverability code is entered in the fifth position of the Uniform SMR Code format as follows:

<i>Recoverability codes</i>	<i>Definition</i>
Z	Nonreparable item. When unserviceable, condemn and dispose at the level indicated in position 3.
O	Reparable item. When uneconomically repairable, condemn and dispose at organizational level.
F	Reparable item. When uneconomically repairable, condemn and dispose at the direct support level.
H	Reparable item. When uneconomically repairable, condemn and dispose at the general support level.
D	Reparable item. When beyond lower level repair capability, return to depot. Condemnation and disposal not authorized below depot level. L- Repairable item. Repair, condemnation, and disposal not authorized below depot/specialized repair activity level.
A	Item requires special handling or condemnation procedures because of specific reasons (i.e., precious metal content, high dollar value, critical material or hazardous material). Refer to appropriate manuals/directives for specific instructions.

c. *National Stock Number.* Indicates the National

stock number assigned to the item and will be used for requisitioning purposes.

*d. Federal Supply Code for Manufacturer (FSCM).* The FSCM is a 5-digit numeric code listed in SB 708-41/42 which is used to identify the manufacturer, distributor, or Government agency, etc.

*e. Part Number.* Indicates the primary number used by the manufacturer (individual, company, firm, corporation, or Government activity), which controls the design and characteristics of the item by means of its engineering drawings, specifications, standards, and inspection requirements to identify an item or range of items.

#### NOTE

When a stock numbered item is requisitioned, the repair part received may have a different part number than the part being replaced.

*f. Description.* Indicates the Federal item name and, if required, a minimum description to identify the item.

*g. Unit of Measure (U/M).* Indicates the standard of the basic quantity of the listed item as used in performing the actual maintenance function. This measure is expressed by a two-character alphabetical abbreviation (e.g., ea., in, pr, etc.). When the unit of measure differs from the unit of issue, the lowest unit of issue that will satisfy the required units of measure will be requisitioned.

*h. Quantity Incorporated in Unit.* Indicates the quantity of the item used in the breakout shown on the illustration figure, which is prepared for a functional group, subfunctional group, or an assembly. A "V" appearing in this column in lieu of a quantity indicates that no specific quantity is applicable, (e.g., shims, spacers, etc.).

#### 4. Special Information

*a.* Detailed manufacturing instructions for items source coded to be manufactured or fabricated are found in TM 11-5985-362-13. Bulk materials required to manufacture items are listed in the Bulk Material Group of this manual.

*b.* Detailed assembly instructions for items source coded to be assembled are found in TM 11-5895-362-13. Assembly components are listed

immediately following the item to be assembled.

*c.* The following publication pertains to the OE-317/TSC-99 and its components:

TM 11-5985-362-13, Antenna Group OE-317/ TSC-99.

*d.* National stock numbers (NSN's) that are missing from P source coded items have been applied for and will be added to this TM by future change/ revision when they are entered in the Army Master Data File (AMDF). Until the NSN's are established and published, submit exception requisitions to:

Commander, US Army Communications-Electronics Command and Fort Monmouth, ATTN: DR-SEL-MM, Fort Monmouth, NJ 07703 for the part required to support your equipment.

#### 5. How to Locate Repair Parts

*a.* When National stock number or part number is unknown.

(1) *First.* Using the table of contents, determine the functional group within which the item belongs. This is necessary since illustrations are prepared for functional groups and listings are divided into the same groups.

(2) *Second.* Find the illustration covering the functional group to which the item belongs.

(3) *Third.* Identify the item on the illustration and note the illustration figure and item number of the item.

(4) *Fourth.* Using the Repair Parts Listing, find the figure and item number noted on the illustration.

*b.* When National stock number or part number is known.

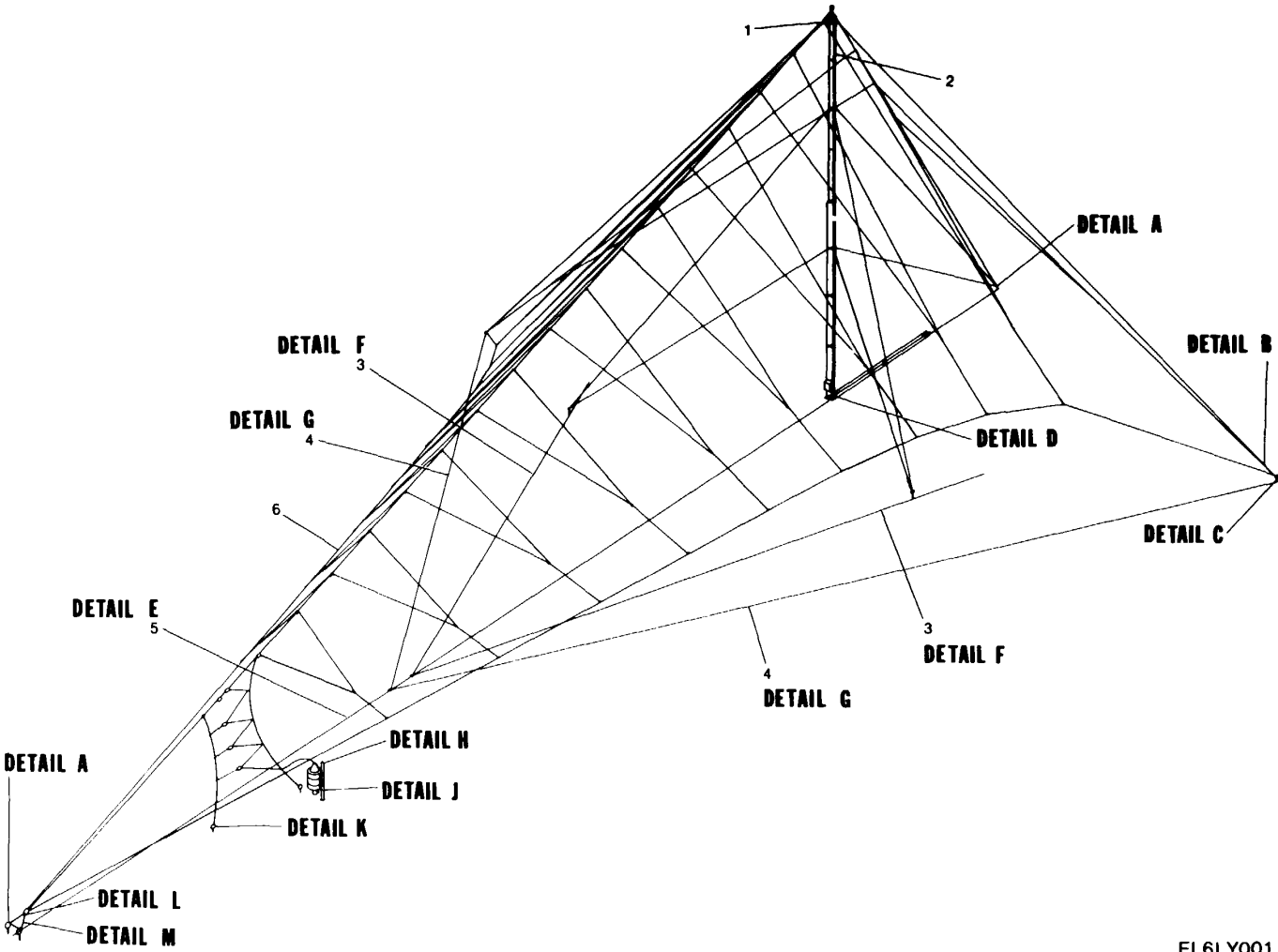
(1) *First.* Using the index of National Stock Numbers and Part Numbers, find the pertinent National stock number or part number. This index is in NIIN sequence followed by a list of part numbers in alphanumeric sequence, cross-referenced to the illustration figure number and item number.

(2) *Second.* After finding the figure and item number, locate the figure and item number in the repair parts list.

#### 6. Abbreviations

Not applicable.

(Next printed page is 4.2)



EL6LY001

FIGURE 1. ANTENNA GROUP OE-317/TSC-99  
(Sheet 1 of 5)

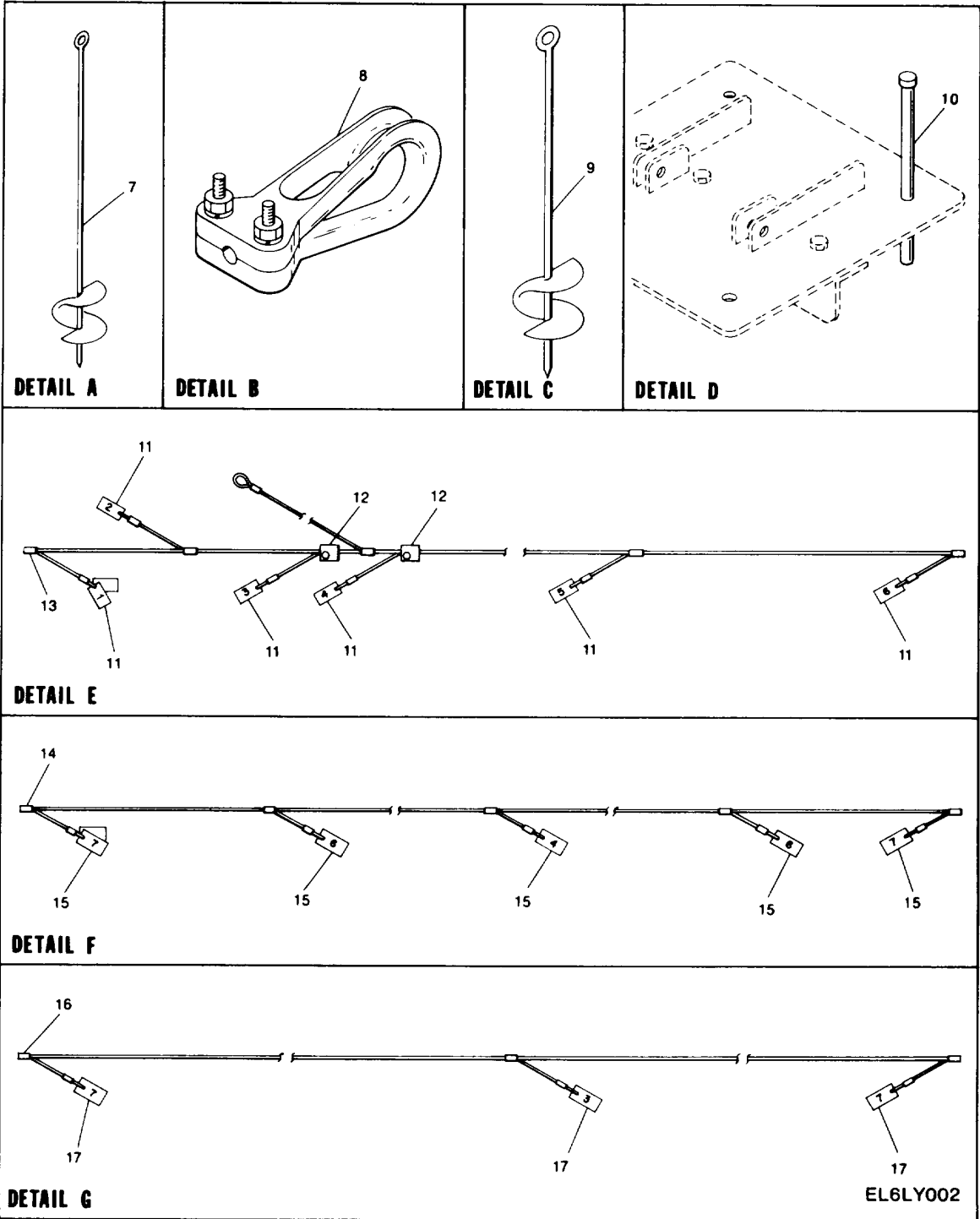


FIGURE 1. ANTENNA GROUP OE-317/TSC-99  
(Sheet 2 of 5)

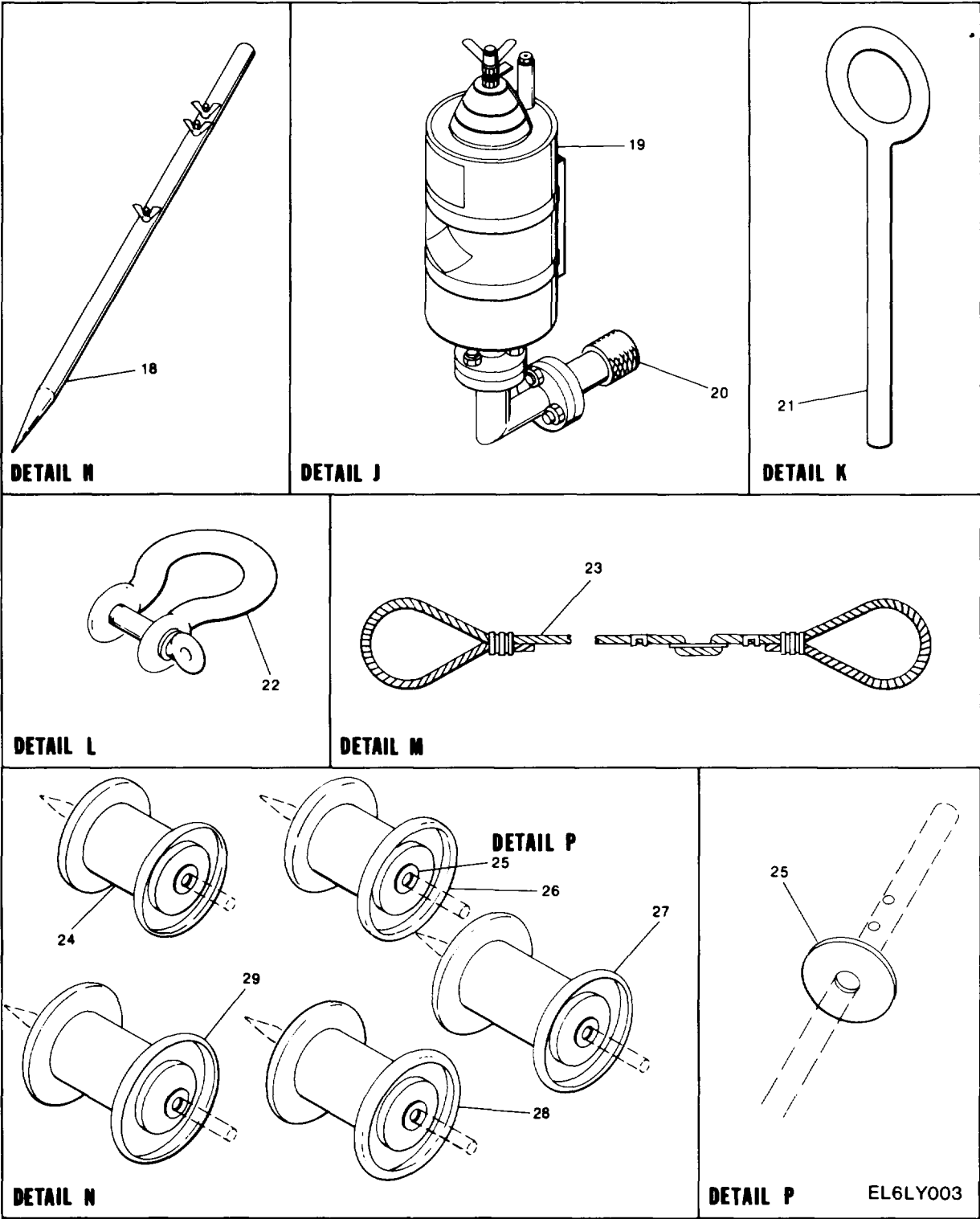


FIGURE 1. ANTENNA GROUP OE-317/TSC-99  
(Sheet 3 of 5)



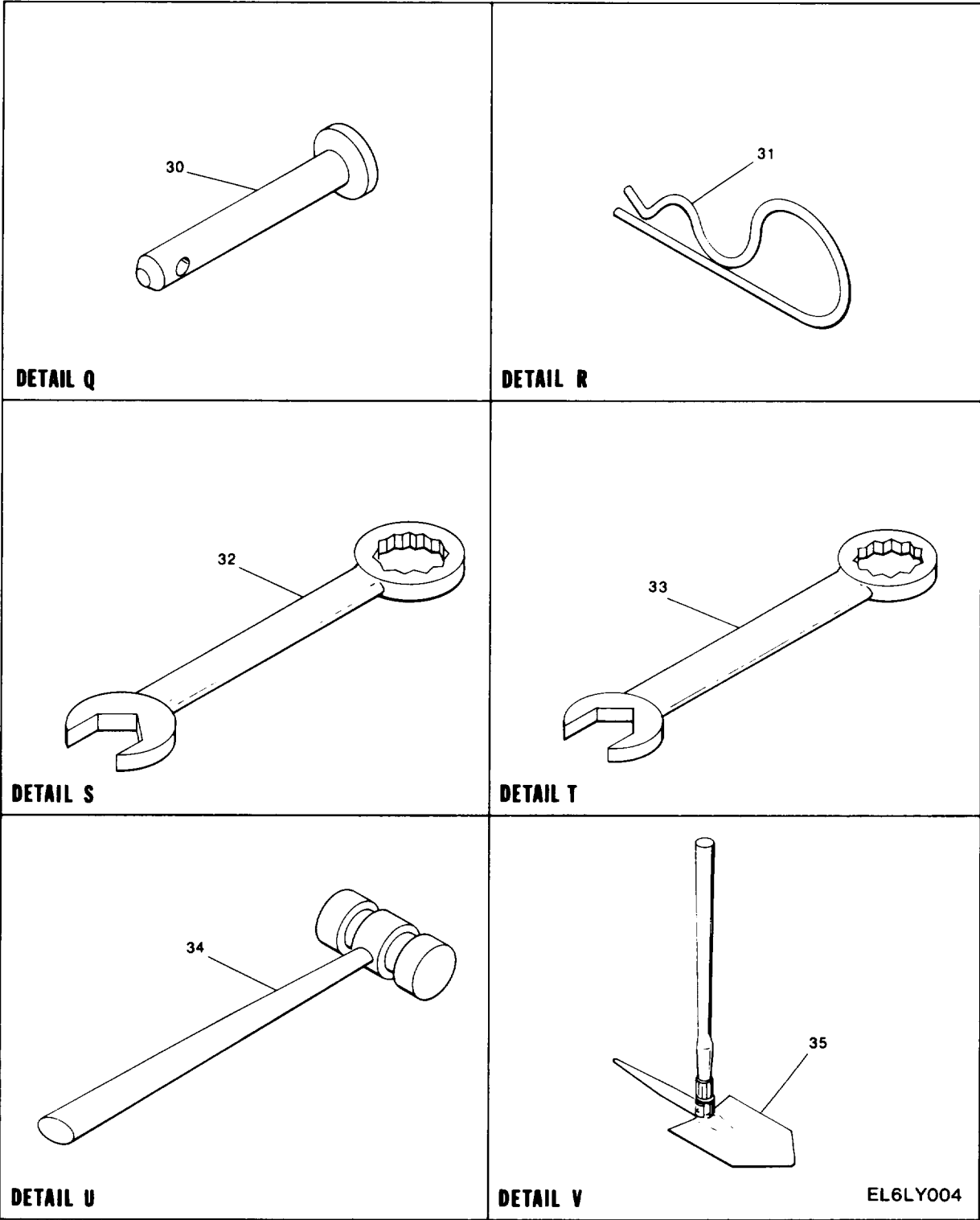


FIGURE 1. ANTENNA GROUP OE-317/TSC-99  
(Sheet 4 of 5)

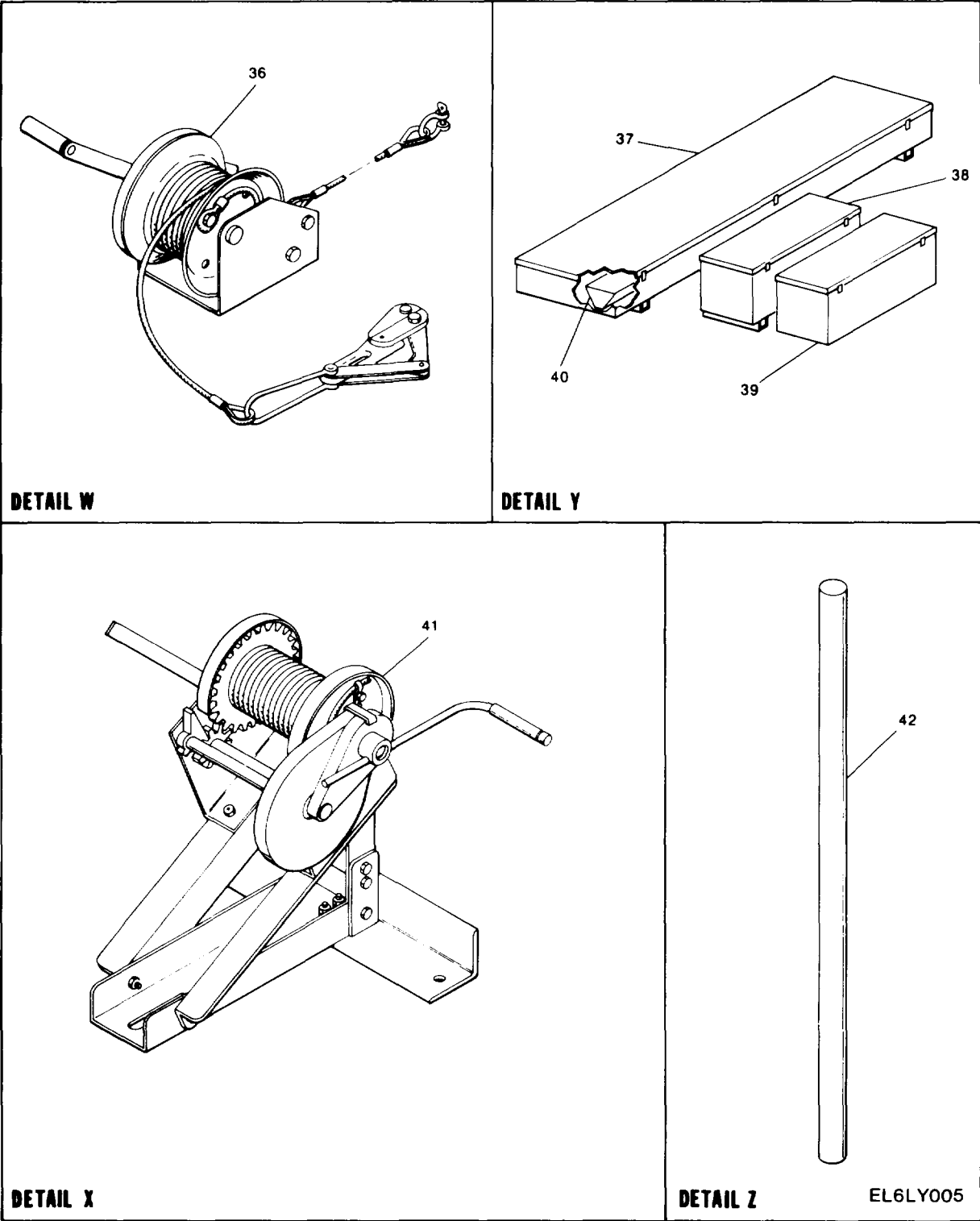


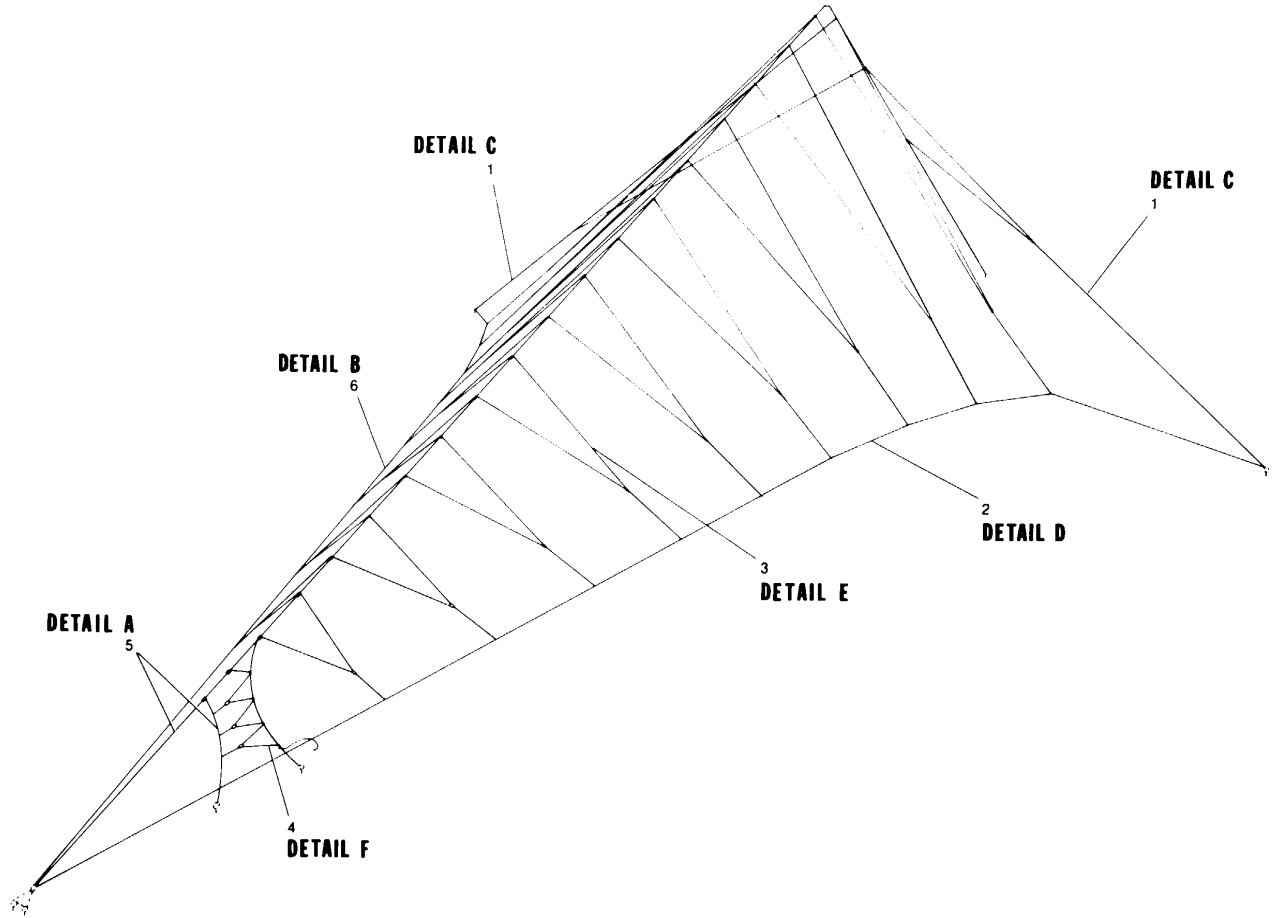
FIGURE 1. ANTENNA GROUP OE-317/TSC-99  
(Sheet 5 of 5)

(1) ILLUSTRATION		(2)	(3)	(4)	(5)	(6)	(7)	(8)
(a) FIG NO.	(b) ITEM NO.	SMR CODE	NATIONAL STOCK NUMBER	FSCM	PART NUMBER	DESCRIPTION  USABLE ON CODE	U/M	QTY INC IN UNIT
						GROUP 00 ANTENNA GROUP OE-311/TSC-99		
1	1	XBFFF		30103	470-ASY-01A	LIGHTING ASSY .....	EA	1
1	2	XBDFF	5895-01-102-6967	80058	A8-128Z/ISC-99	SUPPORT ANTENNA .....	EA	1
1	3	PADDD	595-01-104-1835	30103	124-WIR-02A	MARKER ASSEMBLY.WIR .....	EA	2
1	4	PADDD	5895-01-104-1836	30103	124-WIR-03A	MARKER ASSEMBLY.WIR .....	EA	2
1	5	PADDD	4010-01-104-1834	30103	L24-WIR-01A	WIRE ROPE ASSEMBLY .....	EA	1
1	6	XBDFF	5895-01-095-6219	70058	AS-3442/TSC-99	ANTENNA .....	EA	1
1	7	PADZZ	4030-01-113-3594	73569	EA6	ANCHOR, GUY .....	EA	8
1	8	PADZZ	4030-01-104-1840	30103	080-MOD-01A	CLAMP, WIRE ROP, BOL .....	EA	3
1	9	PADZZ	4030-01-113-1108	30103	030-ANC-02A	ANCHUR.GUY.....	EA	6
	10	PADZZ	530U-01-118-4740	30103	016-8LT-16P	BOLT .....	EA	6
1	11	XBDZZ		30103	124-WIR-04A	MARKER ASSY, WIR .....	E	6
1	12	PADZZ	4030-01-10-18Z7	30103	063-CLA-UIA	CLAMP, WIRE ROPE, BOL .....	EA	2
1	13	PADZZ	5895-01-111-0456	81431	IB-I-C	SPLICE, CONDUCTOR .....	EA	8
1	14	PADZZ	5895-01-111-4556	81431	18-I-C	SPLICE, CONDUCTOR .....	E	5
1	15	XBDZZ		30103	124-WIR-04A	MARKER ASSY, WIR .....	EA	6
1	16	PADZZ	5895-01-111-0456	87431	18-1-C	SPLICE, CONDUCTER .....	EA	3
1	17	XBDZZ		30103	124-WIR-04A	MARKER ASSY, WIR .....	EA	3
1	18	PADZZ	5975-01-104-1839	30103	038-8AR-01A	ROD, GROUND .....	EA	2
1	19	PADZZ	5985-01-097-J400	83058	CU-2273I/TS0-99	COUPLER, ANTENNA REFER TO OPERATORS MANUAL	EA	
1								
1	20	PADZZ	5935-01-112-7295	80058	UG-1531/U	ADAPTER, CONNECTOR .....	EA	1
1	21	PADZZ		74999	J9312	BOLT, EYE .....	EA	4
1	22	PADZZ	4030-00-185-0489	71755	G209 1-2	SHACKLE .....	EA	8
1	23	PADZZ	5895-01-111-0459	30103	056-8DL-01A	BRIDLE ASSEMBLY.....	EA	2
1	24	XBDZZ		30103	001-REL-05A	REEL ASSY, NO.5 .....	EA	1
1	25	PADZZ	5310-01-112-1537	30103	012-WSH-08P	WASHER, FLAT .....	EA	3
1	26	XBDZZ		30103	007-REL-01A	REEL ASSY.NO.1 .....	EA	1
1	27	XBDZZ		30103	007-REL-02A	REEL ASSY.NO.2 .....	EA	1
1	28	XBDZZ		30103	007-REL-03A	REEL ASSY.NO.3 .....	EA	1
1	29	XBDZZ		30103	007-REL-04A	REEL ASSY.NO.4 .....	EA	1
1	30	PADZZ	5315-01-112-2593	96906	MS9468-22	PIN, STRAIGHT. HEADED .....	EA	2
1	31	XBFZZ		96652	1610-0091-01875	PIN, COTTER .....	EA	2
1	32	PAFZZ	5120-00-228-9505	24863	51003	WRENCH.OPEN END .....	EA	2
1	33	PAFZZ	5120-00-228-9505	80919	S1161	WRENCH, OPEN END .....	EA	2
1	34	PADZZ		08325	360Z	HAMMER, HAND.....	EA	2
1	35	PADZZ		53600	T6KT400OOZC	SHOVEL/PICK .....	EA	1
1	36	PBFFF	395O-01-104-1831	30103	003-WIN-02A	WINCH.DRUM, HAND UPE.....	EA	2
1	37	PADFF	5895-01-095-1207	80058	CY-7866/TSC-99	CASE, MAST .....	EA	1
1	38	PADFF	5985-01-095-1206	80058	CY-7861/TSC-99	CASE, ANTENNA COUPLE .....	EA	1
1	39	PADFF	5895-01-095-1205	80058	CY-1865/TSC-99	CASE, ANTENNA.....	EA	2

SECTION II

TM 11-5985-362-23P

(1) ILLUSTRATION		(2)	(3)	(4)	(5)	(6)	(7)	(8)
(a) FIG NO.	(b) ITEM NO.	SMR CODE	NATIONAL STOCK NUMBER	FSCM	PART NUMBER	DESCRIPTION  USABLE ON CODE	U/M	QTY INC IN UNIT
1	40	X80ZZ		30103	092-X-01A	BOX ASSY .....	EA	1
1	41	AFFFF		30103	078-AS-OLA	BASE ASSY WINCH. ....	EA	1
1	2	XBFZZ		30103	U14-BAS-OIA	PIN, BASE .....	EA	2



EL6LY006

FIGURE 2. ANTENNA AS-3442/TSC-99  
(Sheet 1 of 3)

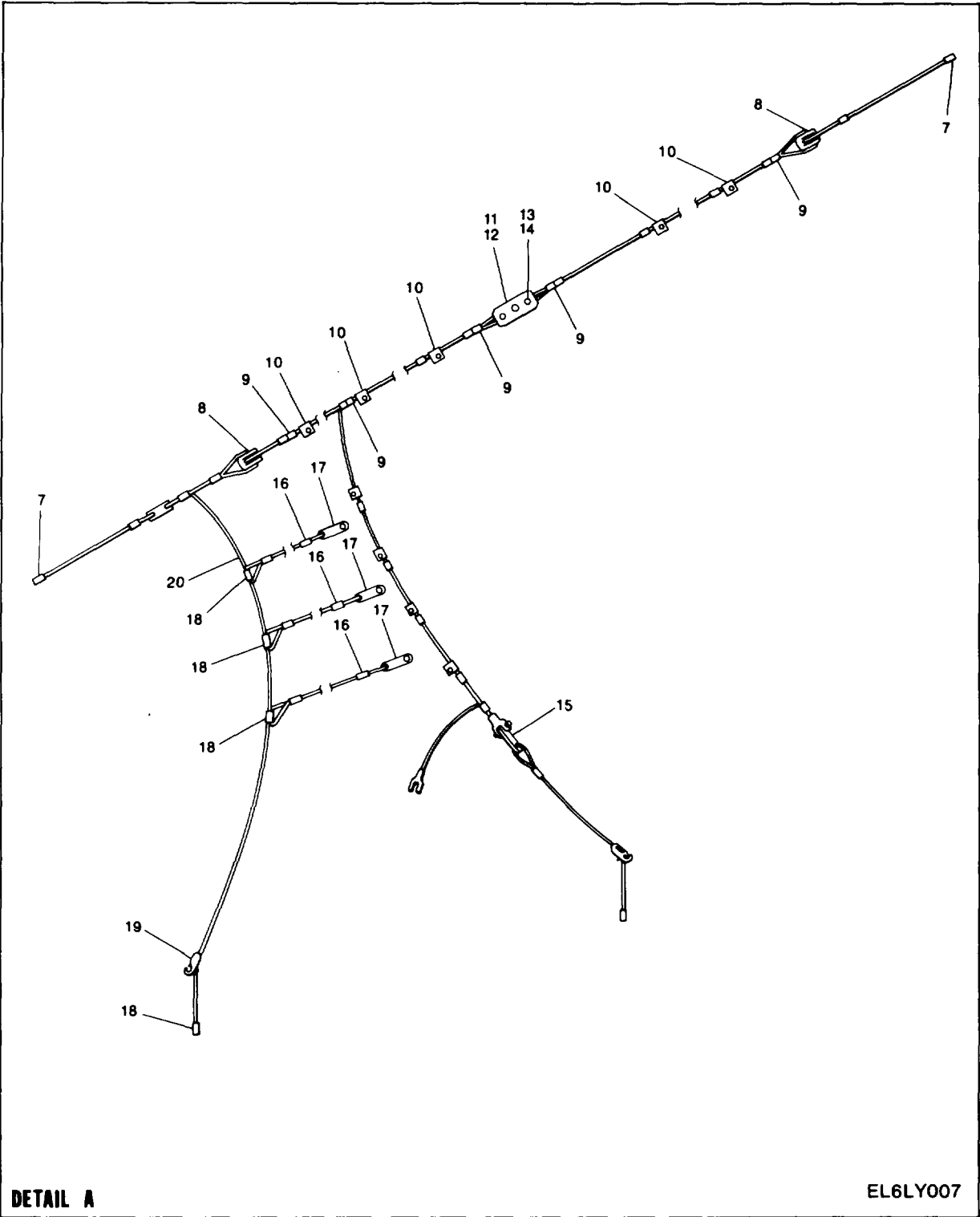


FIGURE 2. ANTENNA AS-3442/TSC-99  
(Sheet 2 of 3)

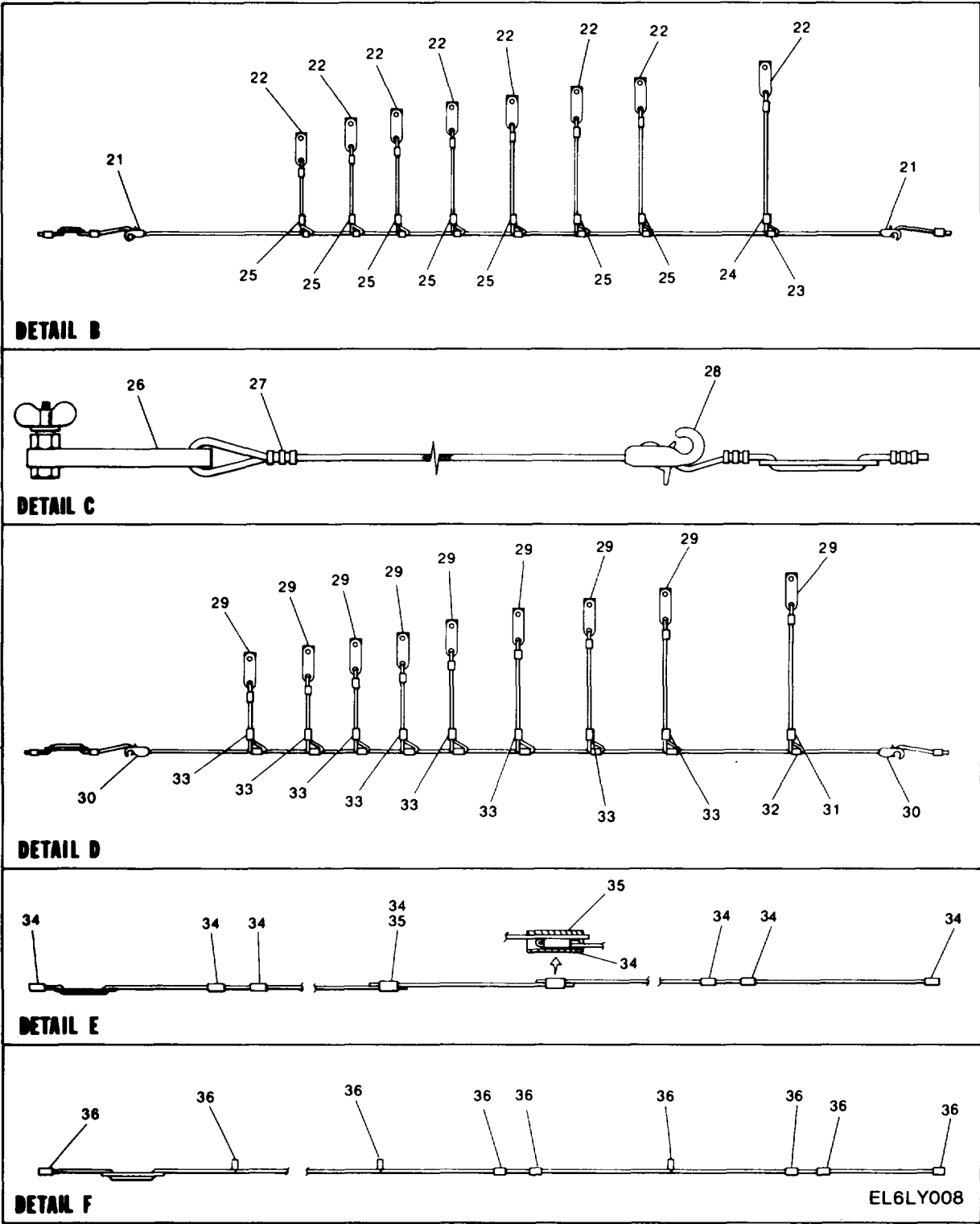


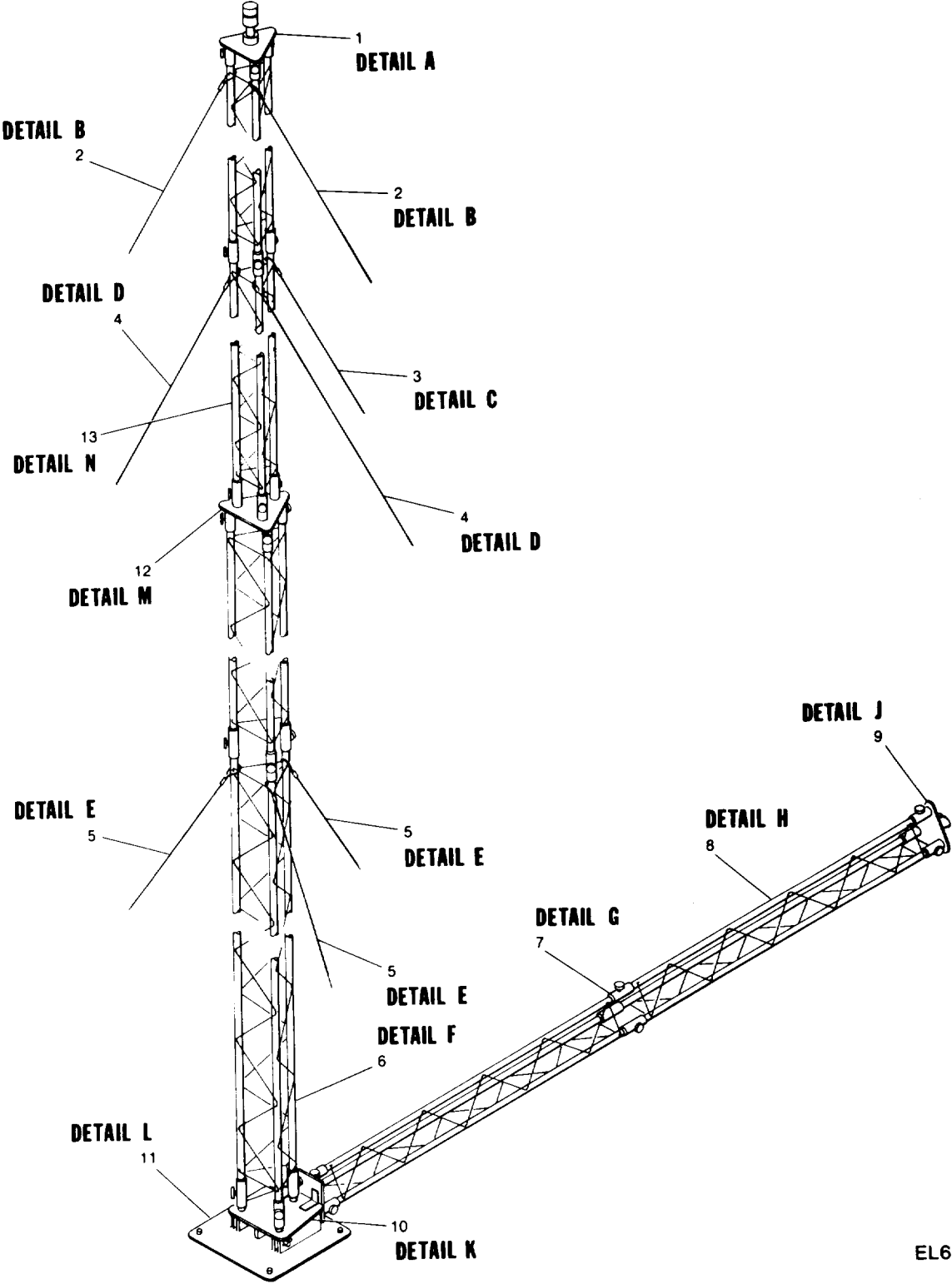
FIGURE 2. ANTENNA AS-3442/TSC-99  
(Sheet 3 of 3)

SECTION II

TM 11-5985-362-23P

(1) ILLUSTRATION		(2)	(3)	(4)	(5)	(6)	(7)	(8)
(a) FIG NO.	(b) ITEM NO.	SMR CODE	NATIONAL STOCK NUMBER	FSCM	PART NUMBER	DESCRIPTION  USABLE ON CODE	U/M	QTY INC IN UNIT
						GROUP 01 ANTENNA AS-3442/TSC-99		
2	1	PADDD	5895-01-104-1833	30103	182-DRP-02A	SUPPORT, ANTENNA .....	EA	2
2	2	PADDD	5895-01-104-1828	30103	221-CAT-01A	SUPPORT, ANTENNA .....	EA	1
2	3	PADDD	5895-01-104-1831	30103	277-RAD-01A	ANTENNA ELEMENT .....	EA	1
2	4	PADDD	5895-01-104-1832	30103	1278-RA-01A	ANTENNA ELEMENT .....	EA	1
2	5	PBDDD	5895-01-104-1825	30103	1181-FLA-01A	FEEDLINE ASSEMBLY .....	EA	1
2	6	PADDD	5895-01-104-1830	30103	222-CAT-01A	SUPPORT, ANTENNA .....	EA	1
2	7	XBDZZ		30103	019-SLV-01A	SLEEVE .....	EA	2
2	8	PADZZ	5970-00-356-0574	74368	602MODIFIED	INSULATOR, STRAIN .....	EA	2
2	9	PADZZ	5895-0-111-0454	87431	18-6-X	SPLICE, CONDUCTOR .....	EA	13
2	10	PADZZ	4030-01-104-1827	30103	063-CLA-01A	CLAMP, WIRE ROPE BUL .....	EA	21
2	11	XBDZZ		30103	216-PLT-01A	PLATE .....	EA	1
2	12	XBDZZ		30103	216-PLT-02A	PLATE .....	EA	1
2	13	PADZZ	5306-01-113-1098	30103	003-BLT-02P	BOLT, MACHINE .....	EA	2
2	14	PADZZ	5310-01-155-8498	30103	016-NUT-09P	NUT, SELF LOCKING .....	EA	2
2	15	PADZZ	5895-01-104-1829	30103	003-INS-O2P	INSULATOR, ALUMINA .....	EA	1
2	16	PADZZ	5895-01-111-0456	18743	18-1-C	SPLICE, CONDUCTOR .....	EA	3
2	17	PADZZ	5895-01-104-1826	30103	086-CLA-01A	CLAMP, WIRE ROPE BOL .....	EA	3
2	18	PADZZ	5940-00-859-2147	59130	54715	SPLICE, CONDUCTOR .....	EA	4
2	19	PADZZ	4020-01-155-1456	30103	003-SN-P	FIBER ROPE ASSEMBLY .....	EA	1
2	20	XBDDD		30103	223-CAT-01A	DROPWIRE ASSY .....	EA	1
2	21	PADZZ	4020-01-155-7456	30103	003-SNP-01P	FIBER ROPE ASSEMBLY .....	EA	2
2	22	PADZZ	5895-01-104-1829	30103	003-INS-02P	INSULATOR, ALUMINA .....	EA	8
2	23	PADZZ	5895-01-111-0454	87431	18-6-X	SPLICE, CONDUCTOR .....	EA	1
2	24	PADZZ	5895-01-111-0457	87431	18-4-P	SPLICE, CONDUCTOR .....	EA	1
2	25	PADZZ	5895-01-111-0456	87431	18-1-C	SPLICE, CONDUCTOR .....	EA	7
2	26	PADZZ	5895-01-104-8261	30103	086-CLA-01A	CLAMP, WIRE ROPE BOL .....	EA	1
2	27	PADZZ	5895-01-111-0458	87431	18-10-F6	SPLICE, CONDUCTOR .....	EA	1
2	28	PADZZ	4020-01-155-1456	30103	003-SNP-01P	FIBER ROPE ASSEMBLY .....	EA	1
2	29	PADZZ	589S-01-10-1829	30103	003-INS-02P	INSULATOR, ALUMINA .....	EA	9
2	30	PADZZ	4020-01-155-7456	30103	003-SNP-01P	FIBER ROPE ASSEMBLY .....	EA	2
2	31	PADZZ	5895-01-111-0457	87431	18-4-P	SPLICE, CONDUCTOR .....	EA	1
2	32	PADZZ	5895-01-11-0454	87431	18-6-X	SPLICE, CONDUCTOR .....	EA	1
2	33	PADZZ	5895-01-111-0456	87431	18-1-C	SPLICE, CONDUCTOR .....	EA	8
2	34	PADZZ	5895-01-111-0456	87431	18-1-C	SPLICE, CONDUCTOR .....	EA	58
2	35	PADZZ	5895-01-111-045	87431	184-P	SPLICE, CONDUCTOR .....	EA	2
2	36	PADZZ	5895-01-11-0456	87431	18-1-C	SPLICE, CONDUCTOR .....	EA	11





EL6LY009

FIGURE 3. ANTENNA SUPPORT AB-1282/TSC-99  
(Sheet 1 of 4)

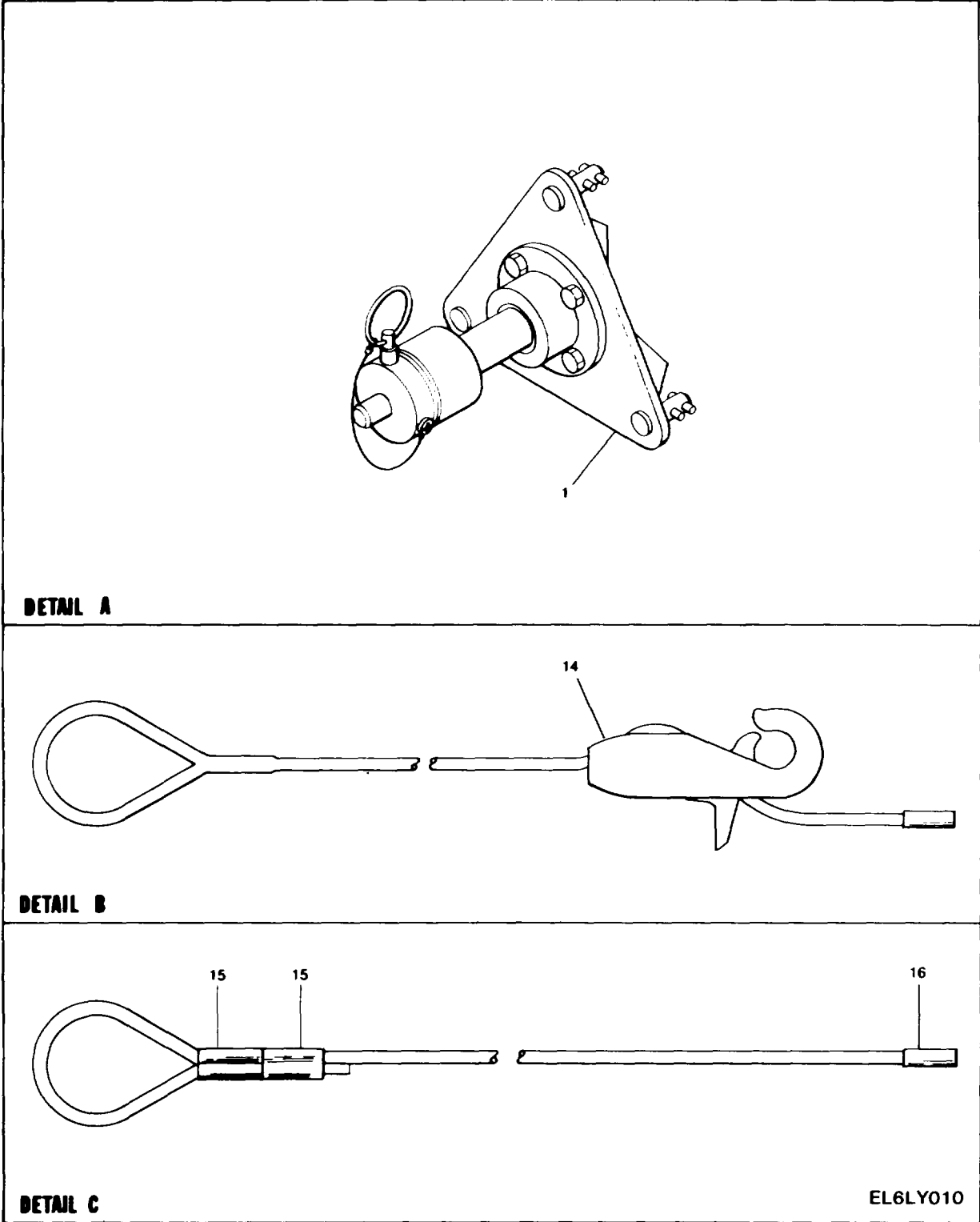
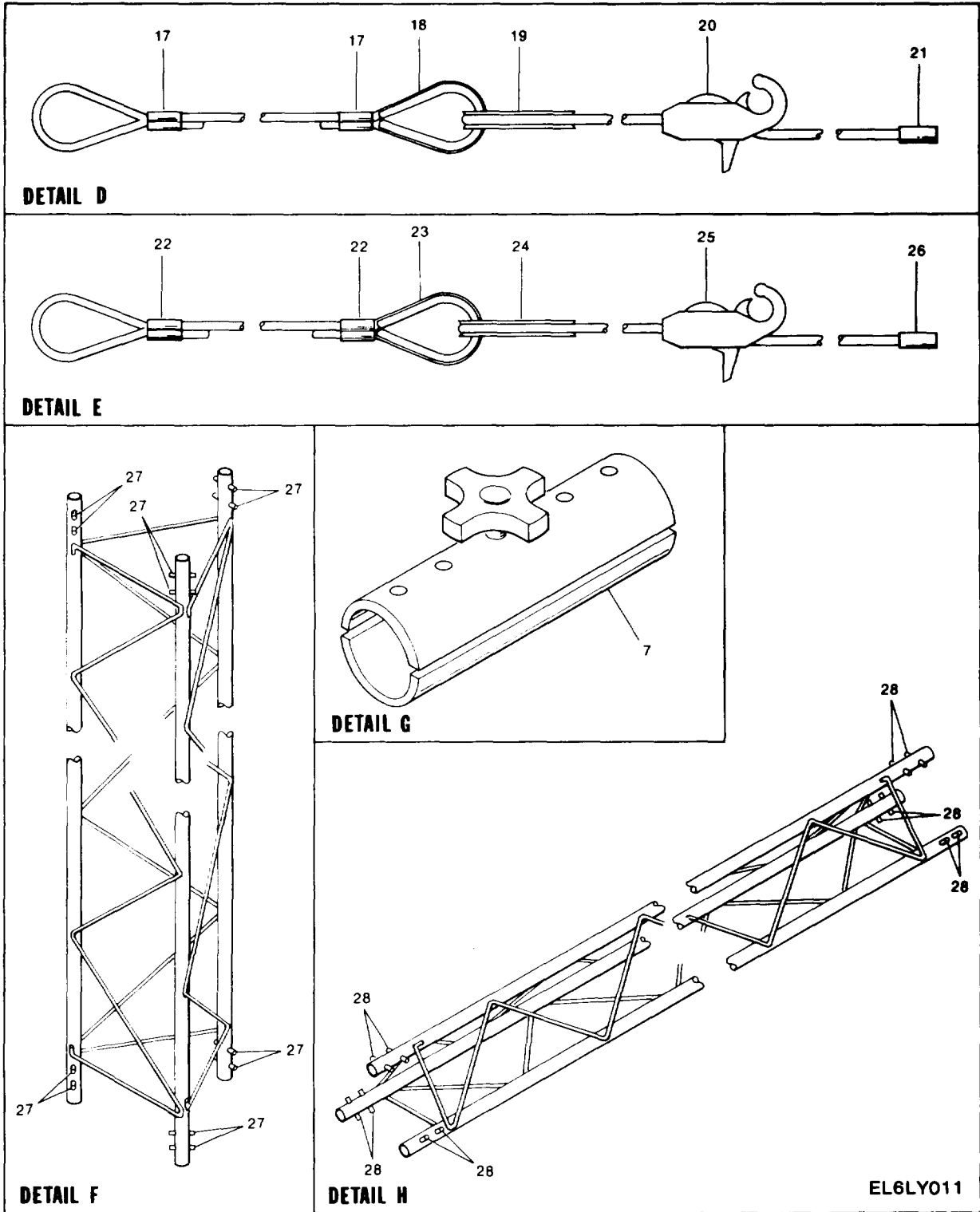


FIGURE 3. ANTENNA SUPPORT AB-1282/TSC-99  
(Sheet 2 of 4)



EL6LY011

FIGURE 3. ANTENNA SUPPORT AB-1282/TSC-99  
(Sheet 3 of 4)

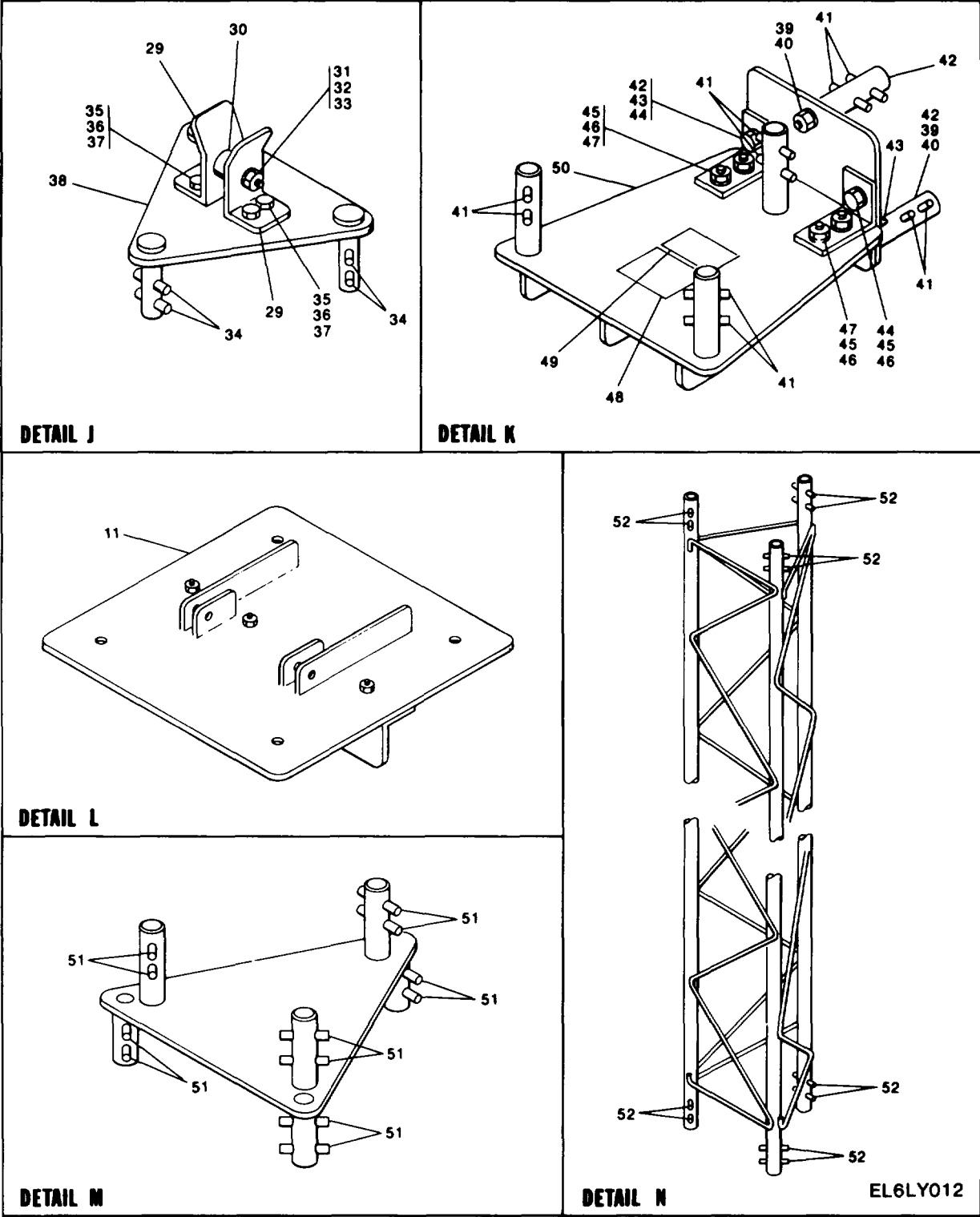


FIGURE 3. ANTENNA SUPPORT AB-1282/TSC-99  
(Sheet 4 of 4)

## SECTION II

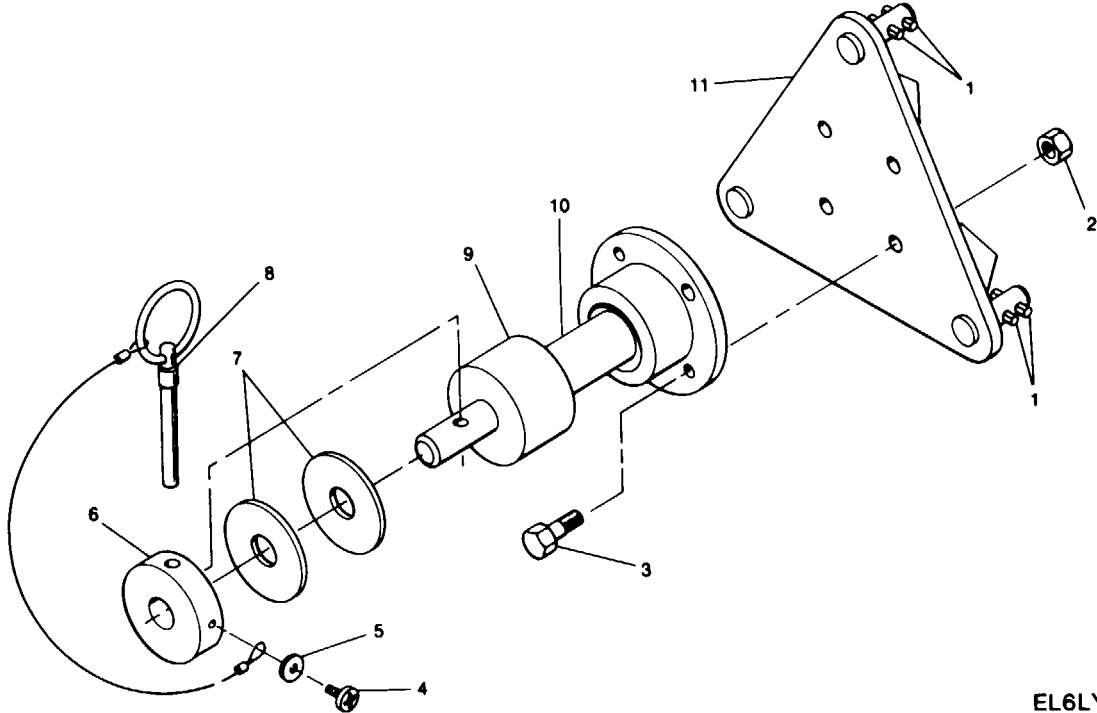
TM 11-5985-362-23P

(1) ILLUSTRATION		(2)	(3)	(4)	(5)	(6)	(7)	(8)
(a) FIG NO.	(b) ITEM NO.	SMR CODE	NATIONAL STOCK NUMBER	FSCM	PART NUMBER	DESCRIPTION  USABLE ON CODE	U/M	QTY INC IN UNIT
						GROUP 02 ANTENNA SUPPORT A8-1282/TSC-99		
3	1	XBDDD		30103	369-PLT-01A	PLATE ASSY .....	EA	1
3	2	PADDD	5895-01-104-1819	30103	202-GUY-37A	GUY .....	EA	2
3	2	PADDD	5895-01-104-1855	30103	206-GUY-01A	GUY .....	EA	1
3	4	PADDD	5895-01-104-1820	30103	305-GUT-01A	GUY .....	EA	2
3	5	PADDD	5895-01-104-1821	30103	305-GUT-02A	GUY .....	EA	3
3	6	PADDD	5895-01-120-2915	30103	014-TWR-01A	TOWER.ANTENNA SEC .....	EA	4
3	7	PADZZ	5895-01-104-1822	30103	006-SPL-01A	SPLICE ASSEMBLY .....	EA	39
3	8	PADZZ	5895-01-120-2917	30103	014-TWR-06A	TOWER.ANTENNA SEC .....	EA	2
3	9	XBDDD		30103	360-PLT-01A	PLATE ASSY .....	EA	1
3	10	XBDDD		30103	461-AST-01A	BASE ASSY, TOWER .....	EA	1
3	11	PADZZ	5895-01-104-1823	30101	079-BAS-01A	BASE.ANTENNA SUPPOR .....	EA	1
3	12	XBDZZ		30103	370-PLT-01A	PLATE ASSY .....	EA	1
3	13	PADZZ	5895-01-120-2916	30103	014-TWR-03A	TOWER, ANTENNA SEC .....	EA	4
3	14	PADZZ	4020-01-155-7456	30103	003-SNP-01P	FIBER ROPE ASSEMBLY .....	EA	1
3	15	PADZZ	5895-01-111-0454	87431	18-6-X	SPLICE, CONDUCTOR .....	EA	2
3	16	XBDZZ		30103	019-SLV-01I	SLEEVE .....	EA	1
3	17	PADZZ	4030-01-115-0880	76691	188-3-VG	SWAGING SLEEVE.WIRE .....	EA	2
3	18	XBDZZ		30103	004-THM-04P	THIMBLE .....	EA	1
3	19	XBDZZ		30103	004-THM-03P	THIMBLE .....	EA	1
3	20	PADZZ	4020-01-155-7456	30103	003-SNP-01P	FIBER ROPE ASSEMBLY .....	EA	1
3	21	PADZZ	5940-01-859-2147	59730	54715	SPLICE, CONDUCTOR .....	EA	1
3	22	PADZZ	4030-01-115-0886	76691	188-3-VG	SWAGING SLEEVE, WIRE .....	EA	2
3	23	XBDZZ		30103	004-THM-04P	THIMBLE .....	EA	1
3	24	XBDZZ		30103	004-THM-03P	THIMBLE .....	EA	1
3	25	PADZZ	4020-01-155-7456	30103	003-SNP-01P	FIBER ROPE ASSEMBLY .....	EA	1
3	26	PADZZ	5940-00-859-2147	59730	54715	SPLICE, CONDUCTOR .....	EA	1
3	27	PADZZ	5315-01-114-9229	30103	006-PIN-02P	PIN .....	EA	12
3	28	PADZZ	5315-01-114-9229	30103	006-PIN-02P	PIN .....	EA	12
3	29	XRDZZ		30103	30-PLT-01A	ANGLE .....	EA	2
3	30	XBFZZ		30103	360-PLT-04A	SPACER .....	EA	1
3	31	PADZZ	5306-01-113-1097	30103	003-8LT-03P	NUT, MACHINE .....	EA	1
3	32	PADZZ	5310-01-111-9331	30103	004-WSH-01P	WASHER, LOCK .....	EA	1
3	33	PADZZ	5310-01-112-4093	30103	003-NUT-01P	NUT, PLAIN .....	EA	1
3	34	PADZZ	5315-01-114-9229	30103	006-PIN-02P	PIN .....	EA	6
3	35	PADZZ	5306-01-111-1096	30103	007-BLT-09P	BOLT, MACHINE .....	EA	4
3	36	PADZZ	5310-01-113-5192	30103	004-WSH-02P	WASHER, LOCK .....	EA	4
3	37	PADZZ	5310-01-113-3588	30103	006-NUT-01P	NUT, PLAIN, HEXAGON .....	EA	4
3	38	XADZZ		30103	360-PLT-03A	WELDMENT .....	EA	1
3	39	PADZZ	5310-01-111-9331	30103	004-WSH-01P	WASHER, LOCK .....	EA	3

SECTION II

TM 11-5985-362-23P

(1) ILLUSTRATION		(2)	(3)	(4)	(5)	(6)	(7)	(8)
(a) FIG NO.	(b) ITEM NO.	SMR CODE	NATIONAL STOCK NUMBER	FSCM	PART NUMBER	DESCRIPTION  USABLE ON CODE	U/M	QTY INC IN UNIT
3	40	PADZZ	5310-01-112-4093	30103	003-NUT-01P	NUT, PLAIN .....	EA	3
3	41	PADZZ	5315-01-114-9229	30103	006-PIN-02P	PIN .....	EA	12
3	42	PADZZ	5895-01-111-0455	30103	022-PIN-01A	PIN, TOWER .....	EA	3
3	43	PADZZZ	5315-01-113-0978	30103	006-PIN-14P	PIN .....	EA	3
3	44	PADZZ	5306-01-113-1096	30103	007-BLT-09P	BOLT, MACHINE .....	EA	2
3	45	PADZZ	5310-01-113-5192	30103	004-WSH-02P	WASHER, LOCK .....	EA	6
3	46	PADZZ	5310-01-113-3588	30103	006-NUT-01P	NUT, PLAIN, HEXAGON .....	EA	6
3	47	PADZZ	50b6-01-113-0394	30103	007-BLT-07P	BOLT, MACHINE .....	EA	4
3	48	XBFZZ		30103	397-PLT-01P	PLATE, IDENT.....	EA	1
3	49	XBFZZ		30103	399-PLI-01P	PLATE, IDENT.....	EA	1
3	50	XBDZZ		30103	461-ASY-02A	WELDMENT .....	EA	EA
1								
3	51	PADZZ	5315-01-114-9229	30103	006-PIN-02P	PIN .....	EA	12
3	52	PADZZ	5315-01-114-9229	30103	006-PIN-02P	PIN .....	EA	12



EL6LY013

FIGURE 4. TOP PLATE, MAST

SECTION II

TM 11-5985-362-23P

(1) ILLUSTRATION		(2)	(3)	(4)	(5)	(6)	(7)	(8)
(a) FIG NO.	(b) ITEM NO.	SMR CODE	NATIONAL STOCK NUMBER	FSCM	PART NUMBER	DESCRIPTION  USABLE ON CODE	U/M	QTY INC IN UNIT
						GROUP 0201 TOP PLATE. MAST		
4	1	PADZZ	5315-01-114-9229	30103	06-PNI-02P	PIN .....	EA	6
4	2	PADZZ	5310-00-207-9084	72962	6BNE-066	NUT, SELF-LOCING.HE .....	EA	4
4	3	PADZZ	5306-01-113-0394	30103	007-BLT-07P	BOLT. MACHINE .....	EA	4
4	4	XBDZZ		30103	024-SCR-OIP	SCREW, SELF-TAP .....	EA	1
4	5	XBDZZ		30103	021-S-OIP	WASHER, FLAT .....	EA	1
4	6	XBDZZ		30103	216-PLT-03A	PLATE .....	EA	1
4	7	XBDZZ		30103	087-SPC-01A	INSULATOR SPACER.....	EA	2
4	8	XBDZZ		30103	018-PIN-O1A	PIN, LOCKING.....	EA	1
4	9	XBDDD		30103	088-INS-01A	INSULATOR ASSY .....	EA	1
4	10	PADZZ	5970-01-104-1824	30103	087-INS-01A	INSULATOR STAND F .....	EA	1
4	11	XBDDD		30103	368-PLT-01A	PLATE ASSY.....	EA	1



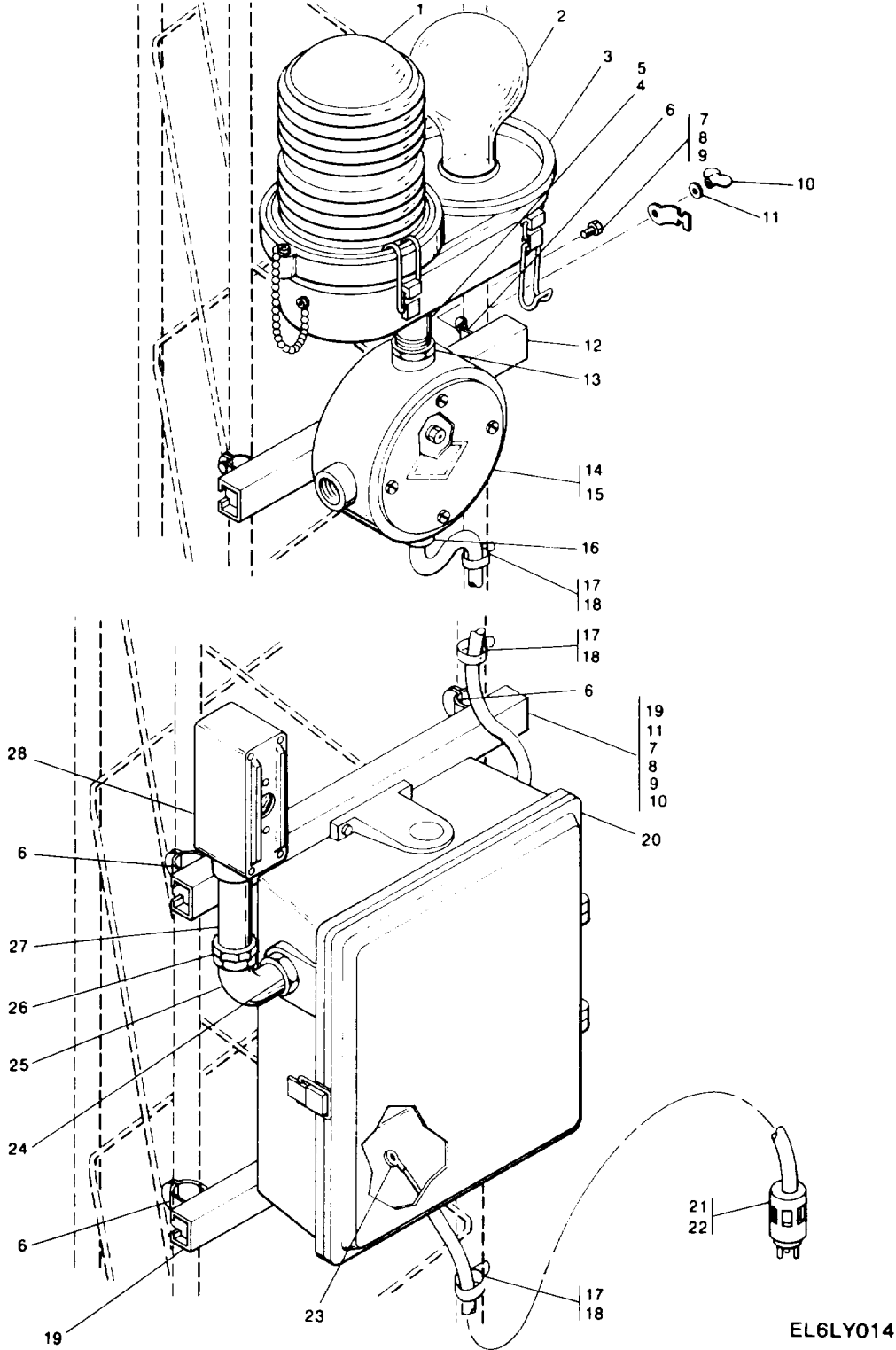


FIGURE 5. MAST ASSEMBLY, LIGHT

SECTION II

TM 11-5985-362-23P

(1) ILLUSTRATION		(2)	(3)	(4)	(5)	(6)	(7)	(8)
(a) FIG NO.	(b) ITEM NO.	SMR CODE	NATIONAL STOCK NUMBER	FSCM	PART NUMBER	DESCRIPTION  USABLE ON CODE	U/M	QTY INC IN UNIT
						GROUP 03 MAST LIGHT ASSEMBLY		
5	1	PADZZ	6210-00-295-2079	94295	GLI020	LENS, LIGHT .....	EA	2
5	2	PADZZ	6240-00-842-2887	24446	116A21/TS	LAMP, INCANDESCENT .....	EA	2
5	3	PAFZZ	6210-00-001-6396	94295	0822-3	LIGHT, MARKER, AIRCRA.....	EA	1
5	4	XBFZZ		30103	004-PIP-08P	CONDUIT, CABLE .....	EA	1
5	5	XBFZZ		59130	42AL-3/4	NUT.LOCKING .....	EA	2
5	6	XBFZZ		96195	P2030AL	CLAMP, CABLE.....	EA	12
5	7	PAFZZ	5310-01-113-3588	30103	006-NUT-O1P	NUT.PLAIN, HEXAGON .....	EA	4
5	8	XBFZZ		30103	029-BLT-03P	BOLT, MACHINE .....	EA	6
5	9	XBFZZ		30103	004-WSH-03P	WASHER, LOCK .....	EA	6
5	10	XBFZZ		12360	1/4-20	NUT.PLAIN, HEXAGON .....	EA	6
5	11	PAFZZ	5310-01-113-5192	30103	004-WSH-O2P	WASHER, LOCK .....	EA	4
5	12	XBFZZ		30103	527-BKT-01A	BRACKET, J-BOX .....	EA	1
5	13	PAFZZ	5310-00-201-9084	72962	68NE-066	NUT, SELF-LOCKING, HE .....	EA	2
5	14	XBFZZ		94295	AC2047	JUNCTION BOX .....	EA	1
5	15	PAFZZ	5306-01-113-1096	30103	007-BLT-09P	BOLT, MACHINE .....	EA	6
5	16	XBFZZ		75282	ZB20	BOX CONNECTOR, ELECT.....	EA	3
5	17	XBFZZ		00502	676-3-6FR	STRAP.....	EA	1
5	18	XBFZZ		81982	676-3-6FR	STRAP, LINE, SUPPORT .....	EA	10
5	19	XBFZZ		30103	527-BKT-02A	BRACKET.LIGHT .....	EA	2
5	20	XBFFF		30103	031-CTL-O1P	CONTROL UNIT .....	EA	1
5	21	PAFZZ	5935-01-005-3579	81348	WC596-13-3	CONNECTER, PLUG, ELEC .....	EA	1
5	22	PAFZZ	5935-01-111-4722	71183	5200-B	SHELL, ELECTRICAL CO .....	EA	1
5	23	PAFZZ	5940-00-143-4774	96906	MS25036-153	TERMINAL, LUG .....	EA	3
5	24	XBFZZ		59730	142AL-1/2	NUT, LOCKING .....	EA	3
5	25	PAFZZ	5975-00-280-9221	72971	181A	ELBOW, ELECTRICAL CO .....	EA	1
5	26	XBFZZ		59730	601AL	CONDUIT .....	EA	1
5	27	XBFZZ		30103	004-PIP-06P	CONDUIT, CABL E.....	EA	1
5	28	XBFFF		30103	026-CTL-01P	PHOTOCELL ASSY.....	EA	1

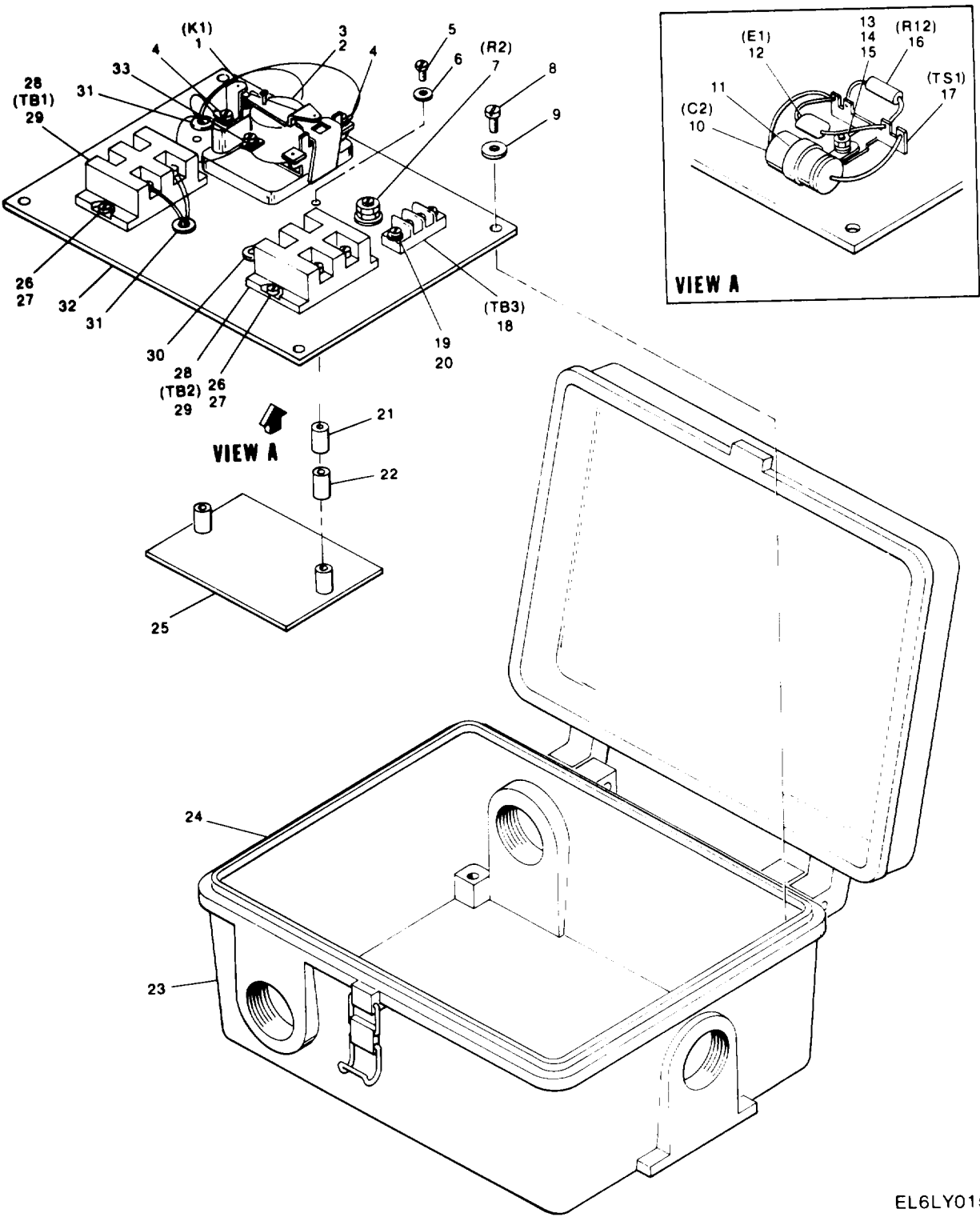


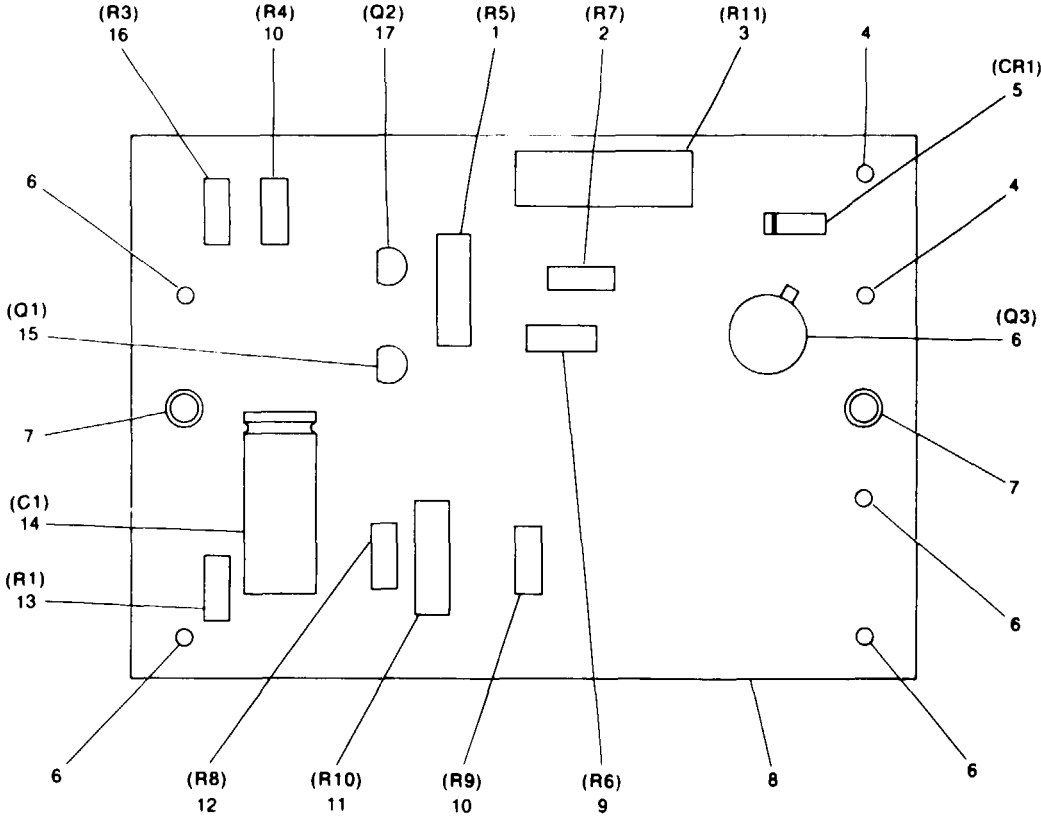
FIGURE 6. CONTROL BOX  
24

EL6LY015

SECTION II

TM 11-5985-362-23P

(1) ILLUSTRATION		(2)	(3)	(4)	(5)	(6)	(7)	(8)
(a) FIG NO.	(b) ITEM NO.	SMR CODE	NATIONAL STOCK NUMBER	FSCM	PART NUMBER	DESCRIPTION  USABLE ON CODE	U/M	QTY INC IN UNIT
						GROUP 0301 CONTROL BOX		
6	1	PAFZZ	5945-01-111-7581	94295	KA211DV2512A	RELAY, ELECTROMAGNET.....	EA	1
6	2	XBFZZ		30103	001-SCR-046	SCREW, MACHINE .....	EA	2
6	3	XBFZZ		30103	018-WSH-004	WASHER, LOCK .....	EA	2
6	4	PAFZZ	5940-00-143-4774	96906	MS25036-153	TERMINAL, LUG .....	EA	2
6	5	XBFZZ		30103	001-SCR-033	SCREW, MACHINE .....	EA	2
6	6	XBFZZ		30103	018-WSH-003	WASHER, LOCK .....	EA	2
6	7	PAFZZ	5905-01-111-7515	94295	RV1342R238M	RESISTOR, VARIABLE, N .....	EA	1
6	8	XBFZZ		30103	002-SCR-061	SCREW, MACHINE .....	EA	4
6	9	XBFZZ		30103	016-WSH-008	WASHER, FLAT .....	EA	4
6	10	PAFZZ	5910-00-760-9524	00853	052HJ1O1W1508	CAPACITOR, FIXED, ELE .....	EA	1
6	11	PAFZZ	5910-00-0140	56289	TMS-15	RETAINER.CAPACITOR .....	EA	1
6	12	PAFZZ	5905-01-112-0100	94295	MV130LA2	RESISTOR, VOLTAGE SE .....	EA	1
6	13	XBFZZ		30103	001-SCR-045	SCREW, MACHINE .....	EA	1
6	14	XBFZZ		30103	018-WSH-004	WASHER, LOCK .....	EA	2
6	15	PAFZZ	5310-00-934-9159	96906	MS35649-284	NUT. PLAIN, HEXAGON .....	EA	1
6	16	PAFZZ	5905-00-689-4716	81349	RCR42G331JS	RESISTOR, FIXED, COMP .....	EA	1
6	17	PAFZZ	5940-00-193-0721	71785	54B	TERMINAL BOARD.....	EA	1
6	18	PAFZZ	5940-00-451-6231	75382	599-2004-2	TERMINAL BOARD .....	EA	1
6	19	XBFZZ		30103	001-SCR-028	SCREW, MACHINE .....	EA	2
6	20	XBFZZ		30103	018-WSH-003	WASHER, LOCK .....	EA	2
6	21	XBFZZ		06540	9230-A-171	SPACER.SLEEVE .....	EA	2
6	22	XBFZZ		30103	038-SPC-01A	SPACER, SLEEVE .....	EA	2
6	23	XBFZZ		30103	035-CTL-01P	BOX, PHOTOCELL .....	EA	1
6	24	XBFZZ		94295	PK4382	GASKET .....	EA	1
6	25	PAFFF	5895-01-104-1875	30103	034-CTL-01P	CIRCUIT CARD ASSEMB .....	EA	1
6	26	XBFZZ		30103	001-SCR-042	SCREW, MACHINE .....	EA	4
6	27	XBFZZ		30103	018-WSH-004	WASHER, LOCK .....	EA	4
6	28	PAFZZ	5940-00-937-6319	89020	230	TERMINAL JUNCTION B .....	EA	2
6	29	XBFZZ		89020	213	TERMINAL JUNCTION B .....	EA	4
6	30	PAFZZ	5975-00-968-5048	28520	SB-375-4	BUSHING, ELECTRICAL.....	EA	1
6	31	PAFZZ	5975-00-885-8290	28520	SB-437-5	BUSHING.ELECTRICAL.....	EA	2
6	32	XAFZZ		94295	AP5043	COMPONENT BOARD.....	EA	1
6	33	PAFZZ	5940-00-204-8966	59730	RA18-6	TERMINAL, LUG .....	EA	2



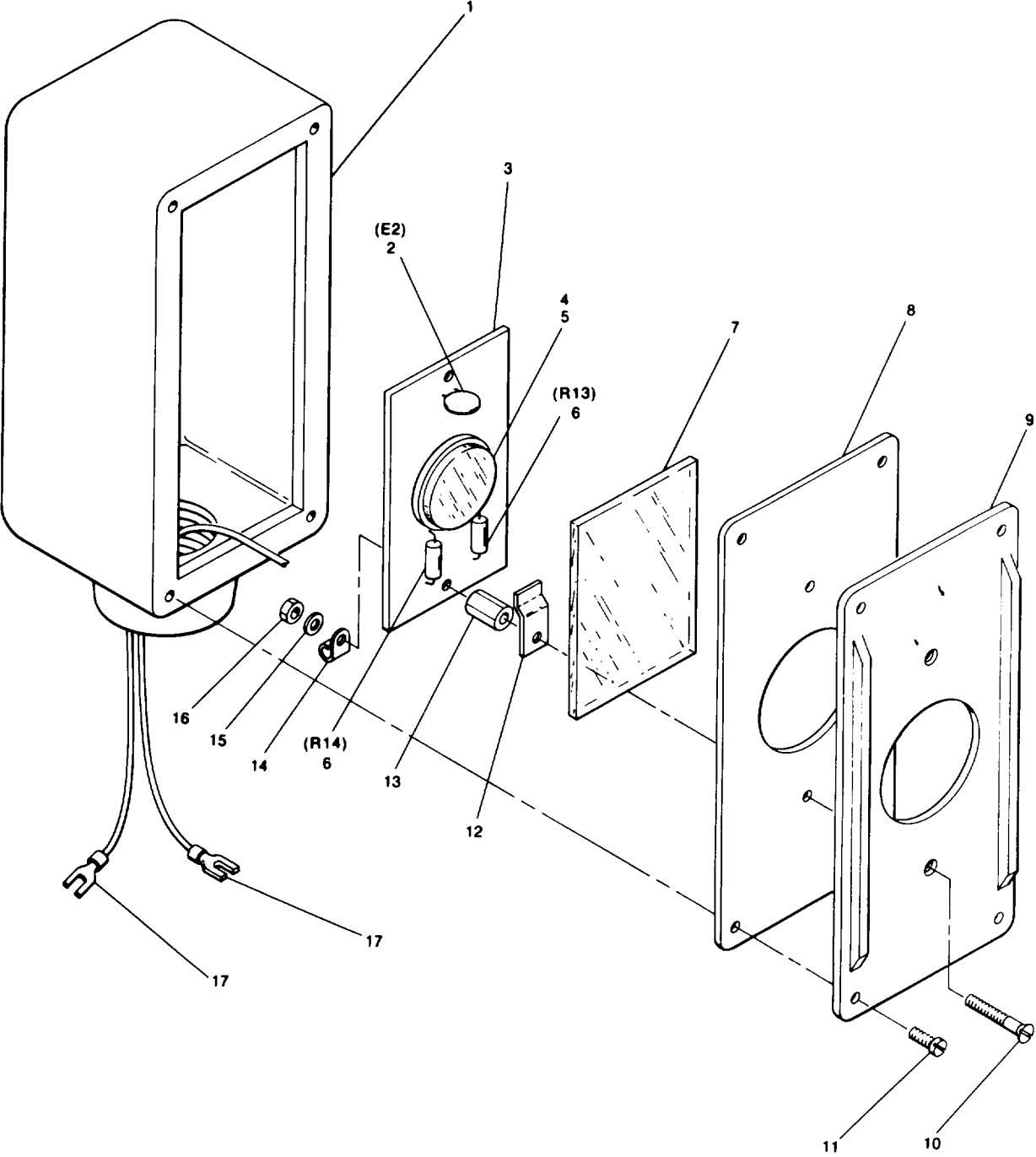
EL6LY016

FIGURE 7. PRINTED WIRING BOARD  
26

SECTION II

TM 11-5985-362-23P

(1) ILLUSTRATION		(2)	(3)	(4)	(5)	(6)	(7)	(8)
(a) FIG NO.	(b) ITEM NO.	SMR CODE	NATIONAL STOCK NUMBER	FSCM	PART NUMBER	DESCRIPTION  USABLE ON CODE	U/M	QTY INC IN UNIT
						GROUP 030101 PRINTED WIRING BOARD		
7	1	PAFZZ	5905-00-410-0298	81349	RCR42G152JS	RESISTOR, FIXED, COMP .....	EA	1
7	2	PAFZZ	5905-00-279-1889	81349	RC20GF361J	RESISTOR, FIXED, COMP .....	EA	1
7	3	PAFZZ	5905-00-833-4321	44655	4642	RESISTOR, FIXED, WIRE .....	EA	1
7	4	PAFZZ	5940-00-990-1658	81349	M55155-30-6	TERMINAL, STUD .....	EA	6
7	5	PAFZZ	5961-00-965-9594	81349	JAN1N3957	SEMICONDUCTOR DEVIC .....	EA	1
7	6	PAFZZ	5961-00-890-9767	92739	014-704	TRANSISTOR .....	EA	1
7	7	XAFZZ		30103	038-SPC-01A	SPACER, SLEEVE .....	EA	2
7	8	XAFZZ		94295	EL5040	PL 80ARD .....	EA	1
7	9	PAFZZ	5905-00-104-8348	81349	RCR20G332JS	RESISTOR, FIXED, COMP .....	EA	1
7	10	PAFZZ	5905-00-141-0600	81349	RCR20G822JS	RESISTOR, FIXED, COMP .....	EA	2
7	11	PAFZZ	5905-00-478-4327	81349	RCR42G332JS	RESISTOR, FIXED, COMP .....	EA	1
7	12	PAFZZ	5905-00-141-1144	81349	RCR20G910JS	RESISTOR, FIXED, COMP .....	EA	1
7	13	PAFZZ	5905-00-141-1161	81349	RCR20G562JS	RESISTOR, FIXED, COMP .....	EA	1
7	14	PAFZZ	5961-00-649-4490	56289	TVA-1207	CAPACITOR, FIXED, ELE .....	EA	1
7	15	PAFZZ	5961-01-023-1682	80131	2N5816	TRANSISTOR.....	EA	1
7	16	PAFZZ	5905-00-279-3502	81349	RCC20GF123J	RESISTOR, FIXED, COMP .....	EA	1
7	17	PAFZZ	5961-01-022-4903	80131	2N5817	TRANSISIOR.....	EA	1



EL6LY017

FIGURE 8. REMOTE PHOTOCCELL  
28

SECTION II

TM 11-5985-362-23P

(1) ILLUSTRATION		(2)	(3)	(4)	(5)	(6) DESCRIPTION	(7)	(8)
(a) FIG NO.	(b) ITEM NO.	SMR CODE	NATIONAL STOCK NUMBER	FSCM	PART NUMBER	USABLE ON CODE	U/M	QTY INC IN UNIT
						GROUP 0302 REMOTE PHOTOCELL		
8	1	XAFZZ		94295	AC4346-1	HOUSING, CELL .....	EA	1
8	2	PAFZZ	5905-01-112-0100	94295	MVL30LA2	RESISTOR, VOLTAGE SE .....	EA	1
8	3	XBFZZ		94295	KM5105	HOLDER, CELL .....	EA	1
8	4	PAFZZ	5961-01-051-1179	94295	AU4387	PHOTOELECTRIC CELL.....	EA	1
8	5	XBFZZ		30103	001-SCR-013	SCREW, MACHINE .....	EA	2
8	6	PAFZZ	5905-00-104-8336	81349	RCR20GL04JS	RESISTOR, FIXED.COMP .....	EA	2
8	7	XBFZZ		94295	AM2064-5	WINDOW, CELL .....	EA	1
8	8	PAFZZ	5330-00-166-0847	94295	PK4346	GASKET .....	EA	1
8	9	XBFZZ		94295	AC4346-2	COVER, CELL.....	EA	1
8	10	XBFZZ		30103	012-SCR-09P	SCREW, MACHINE .....	EA	2
8	11	XBFZZ		30103	007-SCR-043	SCREW, MACHINE .....	EA	4
8	12	XBFZZ		94295	AM5104	CLIP, RETAINER.....	EA	2
8	13	XBFZZ		91833	1006T	SPACER, SLEEVE .....	EA	2
8	14	PAFZZ	5340-00-782-8737	30874	0356742	CLAMP, LOOP .....	EA	1
8	15	XBFZZ		30103	018-WSH-003	WASHER, LOCK .....	EA	2
8	16	PAFZZ	5310-00-934-9761	96906	MS35649-264	NUT, PLAIN, HEXAGUN .....	EA	2
8	17	XBFZZ		59730	18RA-8F	TERMINAL, LUG .....	EA	2



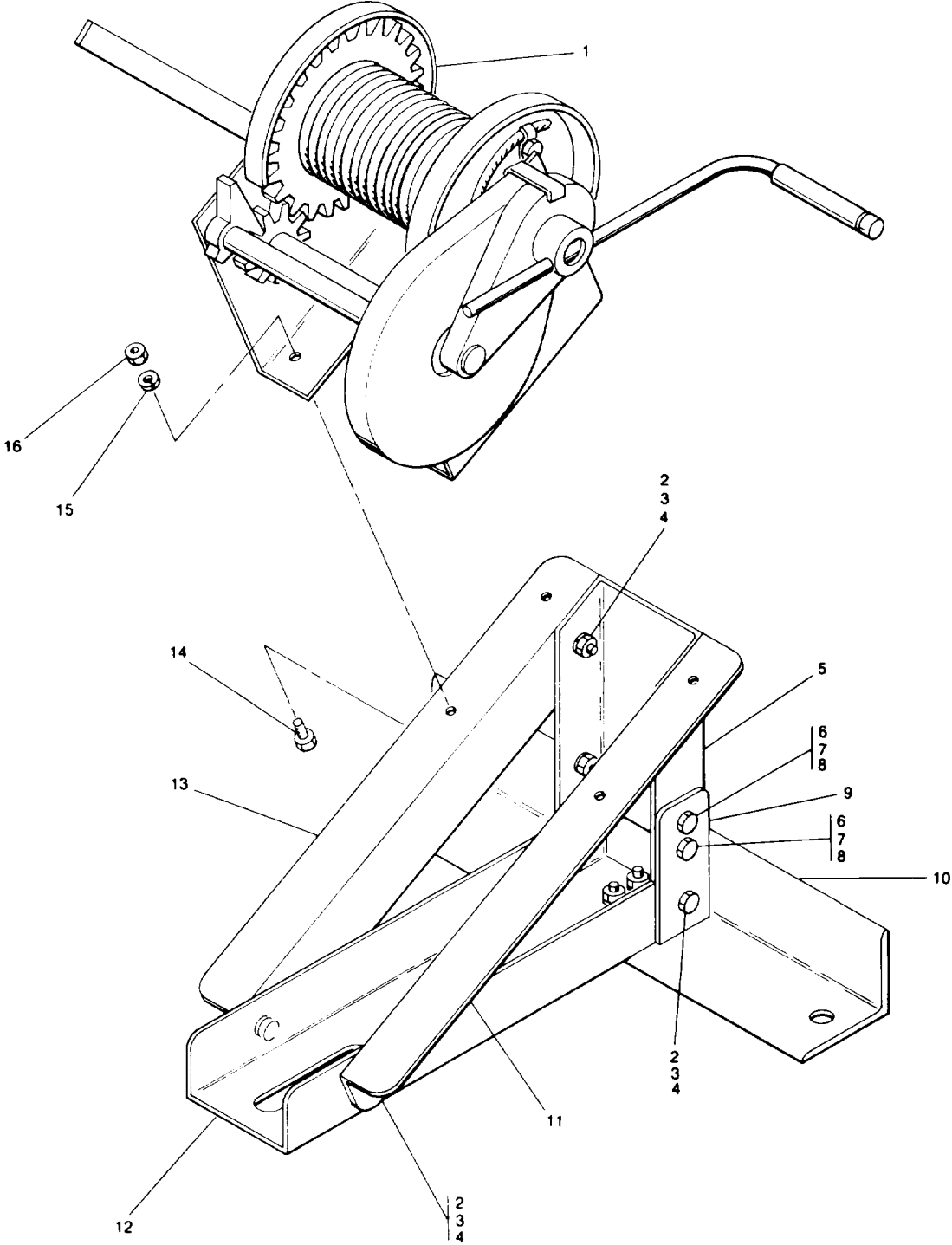


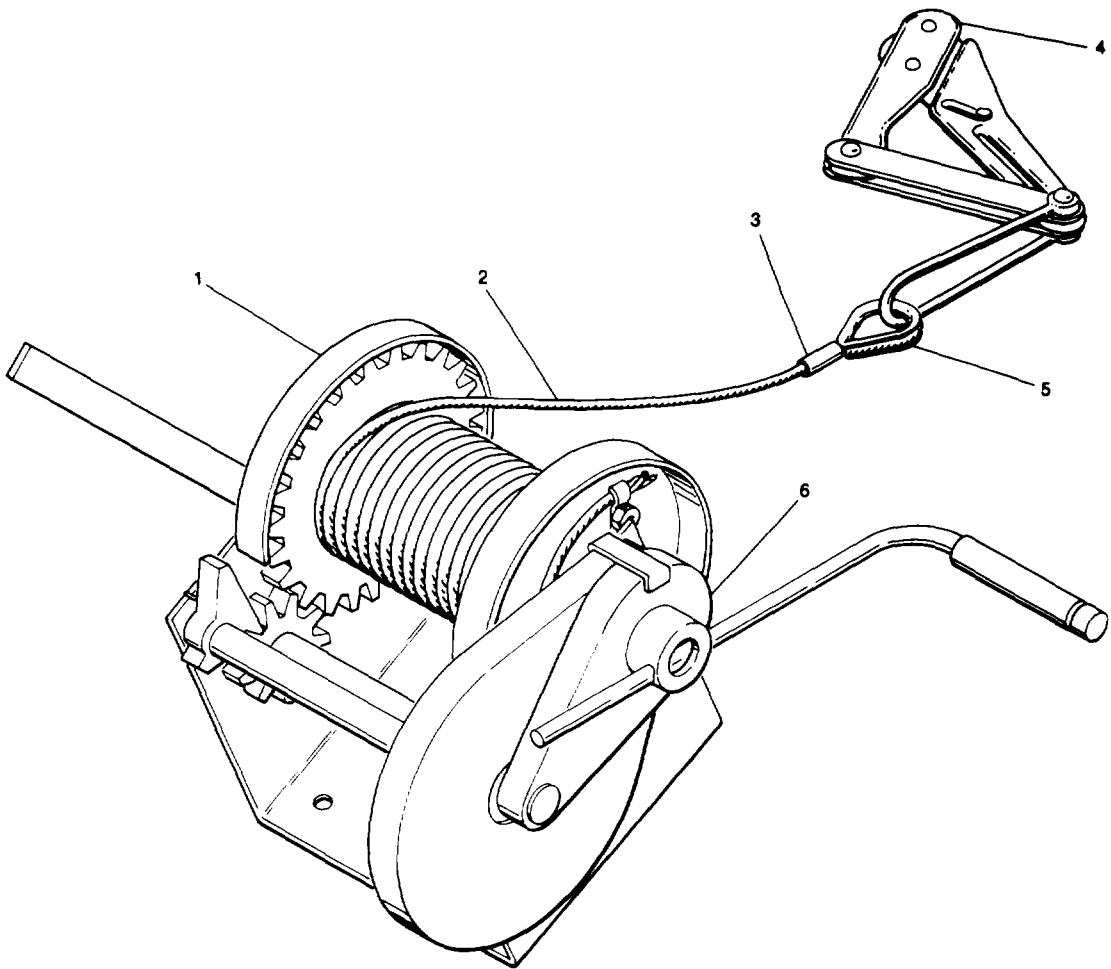
FIGURE 9. BASE ASSEMBLY, TOWER WINCH  
30

EL6LY018

SECTION II

TM 11-5985-362-23P

(1) ILLUSTRATION		(2)	(3)	(4)	(5)	(6)	(7)	(8)
(a) FIG NO.	(b) ITEM NO.	SMR CODE	NATIONAL STOCK NUMBER	FSCM	PART NUMBER	DESCRIPTION  USABLE ON CODE	U/M	QTY INC IN UNIT
						GROUP 04 BASE ASSEMBLY, TOWER WINCH		
9	1	PBFFF	5895-01-104-1838	30103	006-WIN-01A	WINCH, DRUM, HAND OPE .....	EA	1
9	2	PAFZZ	5306-00-113-1099	30103	003-BLT-01P	BOLT, MACHINE .....	EA	6
9	3	PAFZZ	5310-01-111-9331	30103	004-WSH-01P	WASHER, LOCK .....	EA	6
9	4	PAFZZ	5310-01-112-4093	30103	003-NUT-01P	NUT, PLAIN .....	EA	6
9	5	XBFZZ		30103	078-BAS-03A	CHANNEL .....	EA	1
9	6	PAFZZ	5306-01-113-1096	30103	001-BLT-09P	BOLT, MACHINE .....	EA	4
9	7	PAFZZ	5310-01-113-5192	30103	004-WSH-02P	WASHER, LOCK .....	EA	4
9	8	PAFZZ	5310-01-113-3588	30103	006-NUT-01P	NUT, PLAIN, HEXAGON .....	EA	4
9	9	XBFZZ		30103	078-BAS-06A	PLATE .....	EA	1
9	10	XBFZZ		30103	078-BAS-07A	ANGLE .....	EA	1
9	11	XBFZZ		30103	078-BAS-05A	ANGLE .....	EA	1
9	12	XBFZZ		30103	078-BAS-02A	CHANNEL .....	EA	1
9	13	XBFZZ		30103	078-BAS-04A	ANGLE .....	EA	1
9	14	PAFZZ	5305-01-112-4094	30103	003-SCR-060	SCREW .....	EA	4
9	15	PAFZZ	5310-01-112-1541	30103	014-WSH-084	WASHER, LOCK .....	EA	4
9	16	PAFZZ	5310-00-915-8881	96906	MS51971-3	NUT, PLAIN, HEXAGON .....	EA	4



EL6LY019

FIGURE 10. TOWER ASSEMBLY, WINCH  
32

SECTION II

TM 11-5985-362-23P

(1) ILLUSTRATION		(2)	(3)	(4)	(5)	(6)	(7)	(8)
(a) FIG NO.	(b) ITEM NO.	SMR CODE	NATIONAL STOCK NUMBER	FSCM	PART NUMBER	DESCRIPTION  USABLE ON CODE	U/M	QTY INC IN UNIT
10	1	XBFFF		12347	4441	GROUP 0401 TOWER WINCH ASSEMBLY		
10	2	MDFZZ		30103	006-WIN-09A	WINCH, 2000 LB .....	EA	1
10	3	PAFZZ	5895-01-111-0454	81731	18-6-X	WIRE, WINCH MAKE FROM 30103 044-WIR-04P ....	EA	1
10	4	PAFZZ	5120-00-224-2647	75347	1613-30	SPLICE, CONDUCTOR .....	EA	1
10	5	XBFZZ		30103	004-THM-02P	GRIP, CABLE, JAW .....	EA	1
10	6	XBFZZ		12437	844	THIMBLE .....	EA	1
						HANDLE, WINCH .....	EA	1
33								

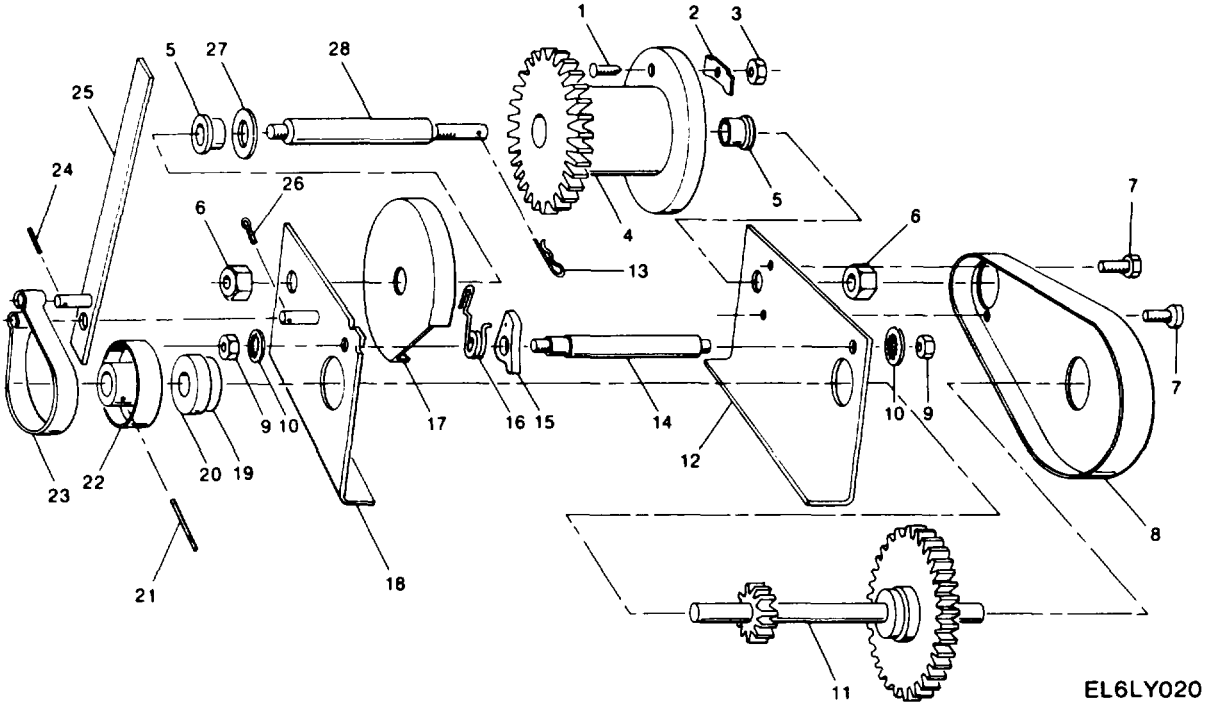
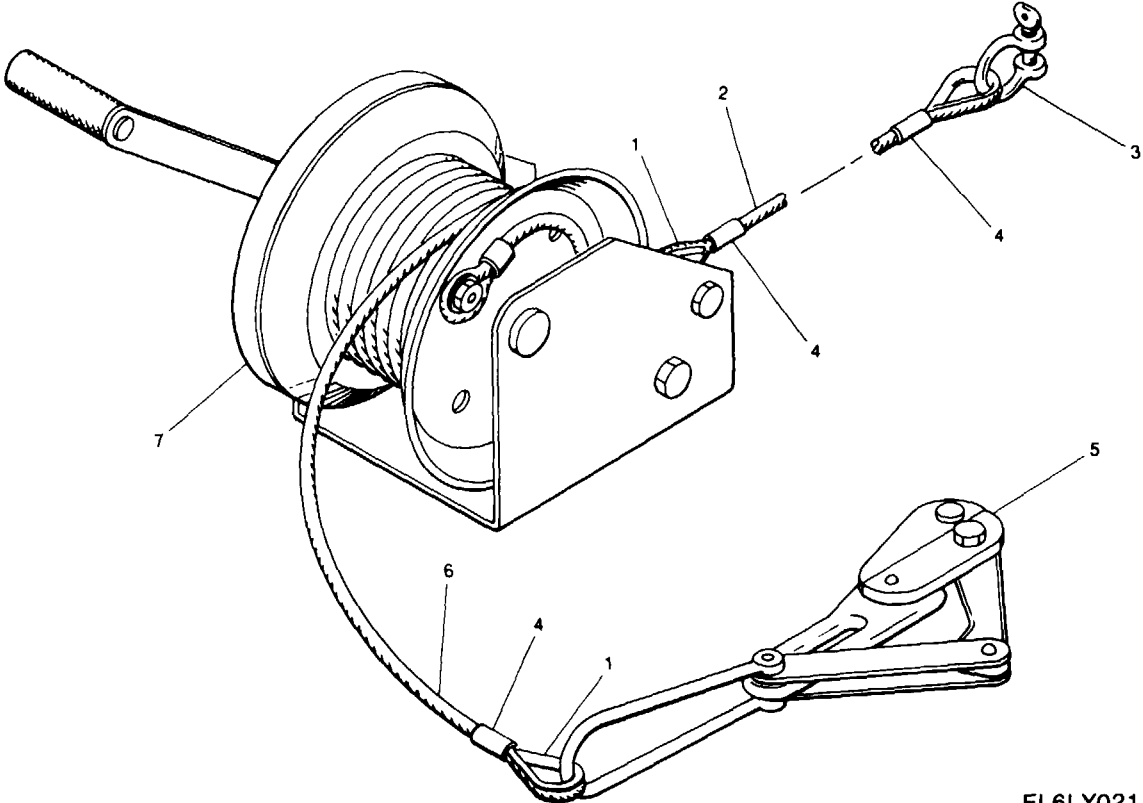


FIGURE 11. SPUR GEAR, WINCH 2000 LBS.

SECTION II

TM 11-5985-362-23P

(1) ILLUSTRATION		(2) SMR CODE	(3) NATIONAL STOCK NUMBER	(4) FSCM	(5) PART NUMBER	(6) DESCRIPTION  USABLE ON CODE	(7) U/M	(8) QTY INC IN UNIT
(a) FIG NO.	(b) ITEM NO.							
						GROUP 040101 WINCH.SPUR GEAR 2000 LB		
11	1	XBFZZ		12437	CB250-750NC	BOLT, CARRIAGE .....	EA	1
11	2	XBFZZ		12437	A1013	TIE DOWN.....	EA	1
11	3	XBFZZ		12437	HN250NC	NUT, PLAIN, HEX .....	EA	1
11	4	XAFZZ		12437	C1013	WELDMENT, DRUM.....	EA	1
11	5	XBFZZ		12437	A1071	BEARING, FLANGE .....	EA	2
11	6	XBFZZ		12437	JN750NC	NUT, LOCKING .....	EA	2
11	7	XBFZZ		12437	CS250-1250NC	SCREW, CAP .....	EA	2
11	8	XBFZZ		12437	B1021	GUARD, GEAR, SHAFT.....	EA	1
11	9	XFBZZ		12437	JN375NC	NUT, PLAIN, HEXAON.....	EA	2
1	10	XBFZZ		12437	LW3755P	WASHER, LOCK .....	EA	2
11	11	XAFZZ		12437	81026	WELDMENT, SHAFT .....	EA	1
11	12	XAFZZ		12437	C1033	PLATE, RIGHT .....	EA	1
11	13	XBFZZ		12437	HP01500-041	PIN, COTTER .....	EA	1
11	14	XSFZZ		12437	A1084	ROD, FRAME .....	EA	1
11	15	XBFZZ		12437	A1047	PAWL, RATCHET.....	EA	1
11	16	XBFZZ		12437	A1140	SPRING, TORSION.....	EA	1
11	17	XBFZZ		12437	81067	GUARD, GEAR, DRUM .....	EA	1
11	18	XAFZZ		12437	81036	PLATE, LEFT .....	EA	1
11	19	XBFZZ		12437	MBU625-14	BUSHING .....	EA	1
11	20	XBFZZ		12437	ASF-169-3A	BEARING, FLANGE .....	EA	2
11	21	XBFZZ		12437	SP187-1250	PIN .....	EA	1
11	22	XBFZZ		12437	AL090	DRUM, BRAKE.....	EA	1
11	23	XBFZZ		12437	B1033	BAND, ASSY, BRAKE .....	EA	1
11	24	XBFZZ		12437	SP125-750	PIN, SPRING .....	EA	1
11	25	XBFZZ		12437	B1035	HANDLE, BRAKE .....	EA	1
11	26	XBFZZ		12437	CP125-750	PIN, COTTER.....	EA	1
11	27	XBFZZ		12437	MBU1000-14	BUSHING .....	EA	1
11	28	XBFZZ		11243	B1030	SHAFT, DRUM.....	EA	1



EL6LY021

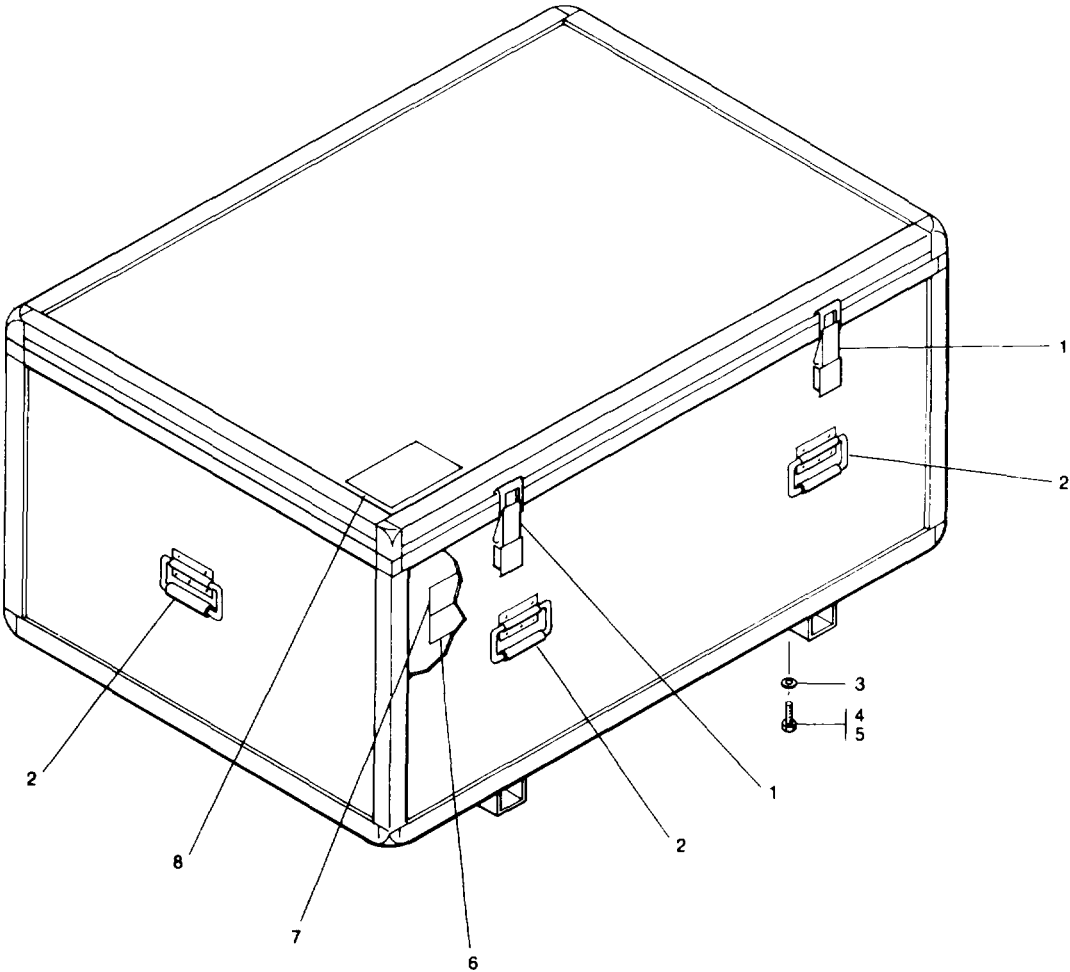
FIGURE 12. WINCH ASSEMBLY, FEEDLINE

SECTION II

TM 11-5985-362-23P

(1) ILLUSTRATION		(2)	(3)	(4)	(5)	(6) DESCRIPTION	(7)	(8)
(a) FIG NO.	(b) ITEM NO.	SMR CODE	NATIONAL STOCK NUMBER	FSCM	PART NUMBER	USABLE ON CODE	U/M	QTY INC IN UNIT
						GROUP 05 FEEDLINE WINCH ASSEMBLY		
12	1	XBFZZ		30103	004-THM-02P	THIMBLE .....	EA	2
2	2	MDFZZ		30103	003-WIN-06	WIRE, WINCH MAKE FROM 30103 044-WIR-04P ....	EA	1
12	3	PAFZZ	4030-01-113-3625	79577	2902-3/8	SHACKLE .....	EA	1
12	4	PAFZZ	5895-01-111-0454	87431	18-6-X	SPLICE, CONDUCTOR .....	EA	3
12	5	PAFZZ	5120-00-224-2647	75347	1613-30	GRIP, CABLE, JAW .....	EA	1
12	6	MDFZZ		30103	003-WIN-05	WIRE, WINCH MAKE FROM 30103 044-WIR-04P ...	EA	1
12	7	XBFZZ		53800	6KV62412	WINCH, HAND .....	EA	1
37								





EL6LY022

FIGURE 13. CASE, ANTENNA CY-7865/TSC-99

SECTION II

TM 11-5985-362-23P

(1) ILLUSTRATION		(2)	(3)	(4)	(5)	(6)	(7)	(8)
(a) FIG NO.	(b) ITEM NO.	SMR CODE	NATIONAL STOCK NUMBER	FSCM	PART NUMBER	DESCRIPTION  USABLE ON CODE	U/M	QTY INC IN UNIT
						GROUP 06 CASE. ANTENNA CY-78B5/TSC-99		
13	1	XBFZZ	5310-00-207-9084	98003	250-35-VHCS	LATCH, SUITCASE .....	EA	4
13	2	XBFZZ		98003	H945-AL2R6	HANDLE .....	EA	6
13	3	XBFZZ		30103	012-WSH-03P	WASHER, FLAT .....	EA	12
13	4	XBFZZ		30103	007-BLT-10P	BOLT, MACHNE .....	EA	12
13	5	PAFZZ		72962	68NE-066	NUT, SELF-LOCKING, HE .....	EA	12
13	6	XBFZZ		30103	418-PLT-01P	PLATE, IDENT .....	EA	1
13	7	XBFZZ		30103	401-PLT-01P	PLATE, IDENT .....	EA	1
13	8	XBFZZ		30103	397-PLT-01P	PLATE, IDENT .....	EA	1

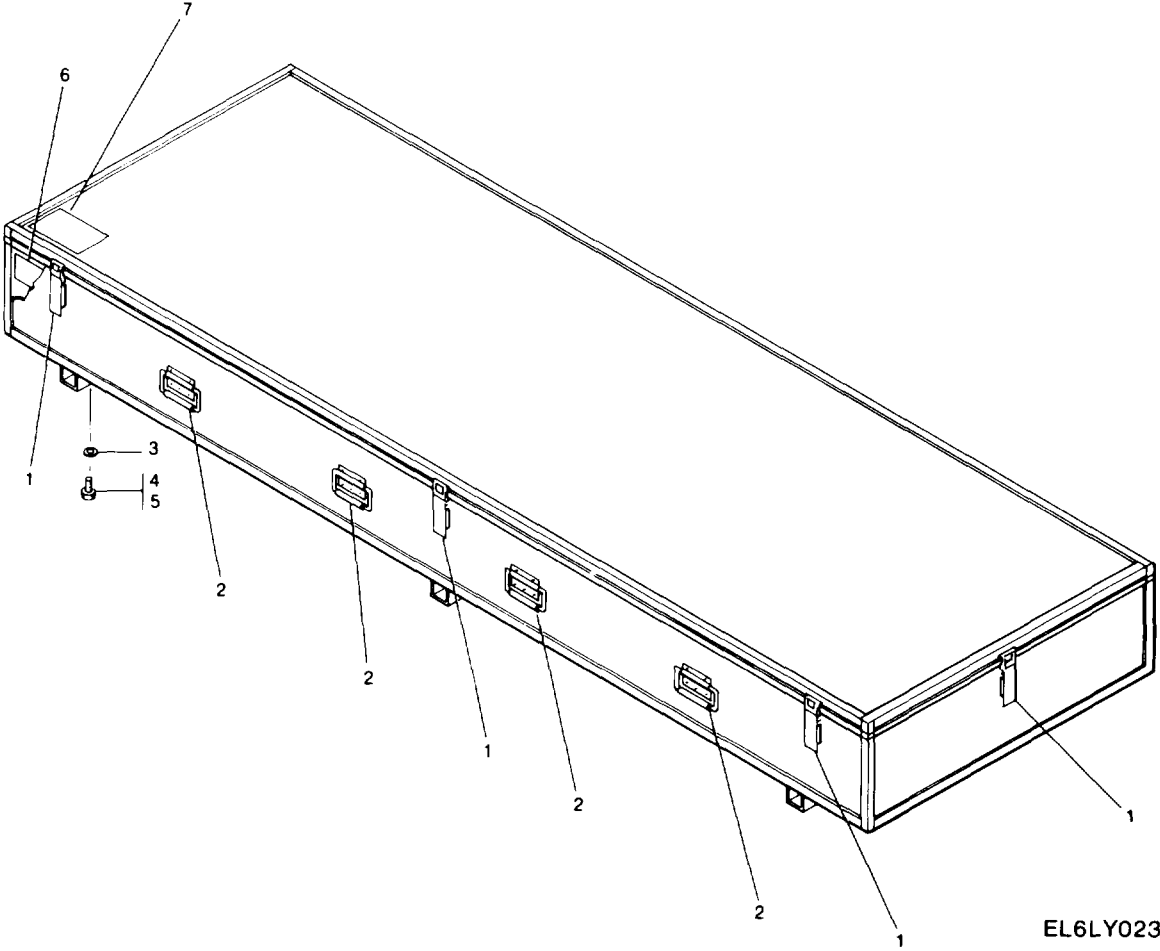
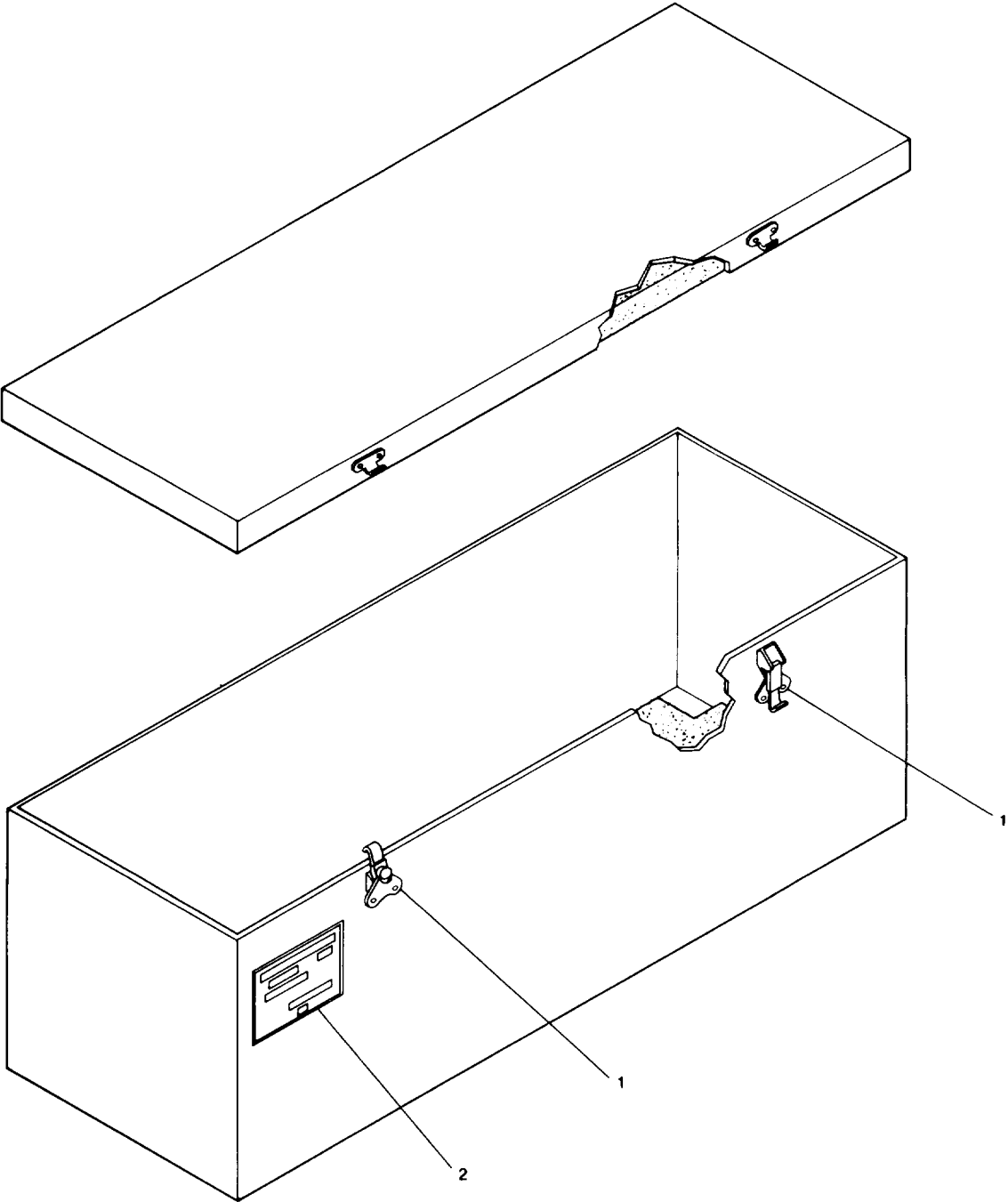


FIGURE 14. CASE, MAST CY-7866/TSC-99  
40

SECTION II

TM 11-5985-362-23P

(1) ILLUSTRATION		(2)	(3)	(4)	(5)	(6)	(7)	(8)
(a) FIG NO.	(b) ITEM NO.	SMR CODE	NATIONAL STOCK NUMBER	FSCM	PART NUMBER	DESCRIPTION  USABLE ON CODE	U/M	QTY INC IN UNIT
						GROUP 07CASE.MASC-78661/TSC-99		
14	1	XBFZZ	5310-00-207-9084	98003	250-35-VHCS	LATCH, SUITCASE .....	EA	8
14	2	XBFZZ		98003	H945-AL2R6	HANDLE .....	EA	8
14	3	XBFZZ		30103	012-WSH-03P	WASHER, FLAT .....	EA	24
14	4	XBFZZ		30103	007-BLT-10P	BOLT, MACHINE .....	EA	24
14	5	PAFZZ		72962	68NE-066	NUT, SELF-LOCKING, HE .....	EA	24
14	6	XBFZZ		30103	400-PLT-01P	PLATE, IDENT.....	EA	1
14	7	XBFZZ		30103	397-PLT-01P	PLATE, IDENT.....	EA	1
41								



EL6LY024

FIGURE 15. CASE, ANTENNA COUPLER CY-7867/TSC-99

SECTION II

TM 11-5985-362-23P

(1) ILLUSTRATION		(2)	(3)	(4)	(5)	(6)	(7)	(8)
(a) FIG NO.	(b) ITEM NO.	SMR CODE	NATIONAL STOCK NUMBER	FSCM	PART NUMBER	DESCRIPTION  USABLE ON CODE	U/M	QTY INC IN UNIT
15	1	PAFZZ	5340-00-680-4375	82240	3	GROUP 08 CASE, ANTENNA COUPLER CY-7867/TSC-99	EA	4
15	2	XBFZZ						

SECTION II

TM 11-5985-362-23P

(1) ILLUSTRATION		(2)	(3)	(4)	(5)	(6)	(7)	(8)
(a) FIG NO.	(b) ITEM NO.	SMR CODE	NATIONAL STOCK NUMBER	FSCM	PART NUMBER	DESCRIPTION  USABLE ON CODE	U/M	QTY INC IN UNIT
BULK		PADZZ		30103	044-WIR-04P	GROUP 99 BULK MATERIAL ROPE, WIRE .....	FT	V

## NATIONAL STOCK NUMBER AND PART NUMBER INDEX

STOCK NUMBER	FIGURE NO.	ITEM NO.	STOCK NUMBER	FIGURE NO.	ITEM NO.
6210-00-001-6396	5	3	3950-01-104-1837	1	36
5905-00-104-8336	8	6	5895-01-104-1838	9	1
5905-00-104-8348	7	9	5975-01-104-1839	1	18
5905-00-141-0600	7	10	4030-01-104-1840	1	8
5905-00-141-1116	7	13	5895-01-104-1855	3	3
5905-00-141-1144	7	12	5895-01-104-1875	6	25
5940-00-143-4774	5	23	5895-01-111-0454	2	9
5940-00-143-4774	6	4	5895-01-111-0454	2	23
5910-00-154-0140	6	11	5895-01-111-0454	2	32
5330-00-166-0847	8	8	5895-01-111-0454	3	15
4030-00-185-0489	1	22	5895-01-111-0454	10	3
5940-00-193-0121	6	17	5895-01-111-0454	12	4
5940-00-204-8966	6	33	5895-01-111-0455	3	42
5310-00-207-9084	4	2	5895-01-111-0456	1	13
5310-00-207-9084	5	13	5895-01-111-0456	1	14
5310-00-201-9084	13	5	5895-01-111-0456	1	16
5310-00-207-9084	14	5	5895-01-111-0456	2	16
5120-00-224-2647	10	4	5895-01-111-0456	2	25
5120-00-224-2647	12	5	5895-01-111-0456	2	33
5120-00-228-9505	1	32	5895-01-111-0456	2	34
5120-00-228-9505	1	33	5895-01-111-0456	2	36
5905-00-279-1889	7	2	5895-01-111-0457	2	24
5905-00-279-3502	1	16	5895-01-111-0457	2	31
5975-00-280-9221	5	25	5895-01-111-0457	2	35
6210-00-295-2079	5	1	5895-01-111-0458	2	27
5970-00-356-0574	2	8	S895-01-111-0459	1	23
5905-00-410-0298	7	1	5935-01-111-4722	5	22
5940-00-451-6231	6	18	5905-01-111-7515	6	7
5905-00-478-4327	7	11	5945-01-111-7581	6	1
5910-00-649-4490	7	14	5310-01-111-9331	3	32
5340-00-680-4375	15	1	5310-01-111-9331	3	39
5905-00-689-4716	6	16	5310-01-111-9331	9	3
5910-00-760-9524	6	10	5905-01-112-0100	6	12
5340-00-712-8137	8	1	5905-01-112-0100	8	2
5995-00-833-4321	7	3	5310-01-112-1537	1	25
6Z40-00-842-2887	5	2	5310-01-112-1541	9	15
5940-00-859-2147	2	18	5315-01-112-2593	1	30
5940-00-859-2147	3	21	5310-01-112-4093	3	33
5940-00-859-2141	3	26	5310-01-112-4093	3	40
5975-00-885-8290	6	31	5310-01-112-4093	9	4
5961-00-890-9167	7	6	5305-01-112-4094	9	14
5310-00-913-8881	9	16	5935-01-112-7295	1	20
5310-00-934-9759	6	5	5306-01-113-0394	3	47
5310-00-934-9761	8	16	5306-01-113-0394	4	3
5940-00-937-6319	6	28	5315-01-113-0978	3	43
5961-00-965-9594	7	5	5306-01-113-1096	3	35
5975-00-968-5048	6	30	5306-01-113-1096	3	44
5940-00-990-1658	7	4	5306-01-113-1096	5	15
5935-01-005-3579	5	21	5306-01-113-1096	9	6
5961-01-022-4903	7	17	5306-01-113-1097	3	31
5961-01-023-1682	7	15	5306-01-113-1098	2	13
5961-01-051-1179	8	4	5306-01-113-1099	9	2
5895-01-095-1205	1	39	4030-01-113-1108	1	9
5985-01-095-1206	1	38	5310-01-113-3588	3	37
5895-01-095-1207	1	37	5310-01-113-3588	3	46
5895-01-095-6219	1	6	5310-01-113-3588	5	1
5985-01-097-3400	1	19	5310-01-113-3588	9	8
5895-01-102-6967	1	2	4030-01-113-3594	1	7
5895-01-104-1819	3	2	4030-01-113-3625	12	3
5895-01-104-1820	3	4	5310-01-113-5192	3	36
5895-01-104-1821	3	5	5310-01-113-5192	3	45
5895-01-104-1822	3	7	5310-01-113-5192	5	11
5895-01-104-1823	3	11	5310-01-113-5192	9	7
5970-01-104-1824	4	10	5315-01-114-9229	3	21
5895-01-104-1825	2	5	5315-01-114-9229	3	28
5895-01-104-1826	2	17	5315-01-114-9229	3	34
5895-01-104-1826	2	26	5315-01-114-9229	3	41
4030-01-104-1827	1	12	5315-01-114-9229	3	51
4030-01-104-1827	2	10	5315-01-114-9229	3	52
5895-01-104-1828	2	2	5315-01-114-9229	4	1
5895-01-104-1829	2	15	4030-01-115-0886	3	11
5895-01-104-1829	2	22	4030-01-115-0886	3	22
5895-01-104-1829	2	29	5306-01-118-4140	1	10
5895-01-104-1830	2	6	5895-01-120-2915	3	6
5895-01-104-1831	2	3	5895-01-120-29L6	3	13
5895-01-104-1832	2	4	5895-01-120-2917	3	8
5895-01-104-1833	2	1	4020-01-155-7456	2	19
4010-01-104-1834	1	5	4020-01-155-7456	2	21
5895-01-104-1835	1	3	4020-01-155-7456	2	28
5895-01-104-1836	1	4	4020-01-155-7456	2	30



## NATIONAL STOCK NUMBER AND PART NUMBER INDEX

STOCK NUMBER	FIGURE NO.	ITEM NO.	STOCK NUMBER	FIGURE NO.	ITEM NO.
4020-01-155-7456	3	14	4020-01-155-7456	3	25
4020-01-155-7456	3	20	5310-01-155-8498	2	14

FSCM	PART NUMBER	FIGURE NO.	ITEM NO.	FSCM	PART NUMBER	FIGURE NO.	ITEM NO.
80058	AB-1282/TSC-99	1	2	94295	RV1342RZ38M	6	7
94295	AC2041	5	14	28520	SB-375-4	6	30
94295	AC4346-1	8	1	28520	S8-437-5	6	31
94295	AC4346-2	8	9	12437	SP125-750	11	24
94295	AN2064-5	8	7	12437	SP187-1250	11	21
94295	AM5104	8	12	80919	S1161	1	33
94295	APS04	6	32	56289	TMS-15	6	11
80058	AS-3442/TSC-99	1	6	56289	TVA-1207	7	14
12437	ASF-169-3A	11	20	53800	T6KB74002C	1	35
94295	AU4387	8	4	80058	UG-1531/U	1	20
12437	A1013	11	2	81348	WC596-13-3	5	21
124J7	A1047	11	15	75282	Z820	5	16
2i437	A1071	11	5	9425	0B22-3	5	3
12437	A1084	11	14	30103	001-SCR-013	8	5
12437	A1090	11	22	30103	001-SCR-028	6	19
12437	A1140	11	16	30[03	001-SCR-033	6	5
12437	B1021	11	8	30103	001-SCR-042	6	26
12437	B1026	11	11	30103	001-SCR-045	6	13
12437	B1030	11	28	30103	001-SCR-046	6	2
12437	B1033	11	23	30103	002-SCR-061	6	8
12437	B1035	11	25	30103	003-BLT-01P	9	2
12437	B1036	11	18	30103	003-BLT-01P	2	13
12437	B1067	11	17	30103	003-BLT-03P	3	31
12437	B44	10	6	30103	003-INS-02P	2	15
12437	CB250-750NC	11	1	30103	003-INS-02P	2	22
12437	CP125-750	11	26	30103	003-INS-02P	2	29
12437	CS250-1250NC	11	7	30103	003-NUT-01P	3	33
80058	CU-2273/TSC-99	1	19	30103	003-NUT-01P	3	40
80058	CY-7865/TSC-99	1	39	30103	003-NUT-01P	9	4
80058	CY-7866/TSC-99	1	37	30103	003-SCR-060	9	14
80058	CY-7867/TSC-99	1	38	30103	003-SNP-01P	2	19
12437	C1013	11	4	30103	003-SNP-01P	2	21
12437	C1033	11	12	30103	003-SNP-01P	2	28
73569	EA6	1	7	30103	003-SNP-01P	2	30
94295	EL5040	7	8	30103	003-SNP-01P	3	14
94295	GL1020	5	1	30103	003-SNP-01P	3	20
77535	G209 1-2	1	22	30103	003-SNP-01P	3	25
12437	HN250NC	11	3	30103	003-WIN-02A	1	36
12437	HP01500-041	11	13	30103	003-WIN-05	12	6
98003	H945-AL2R6	t3	2	30L03	003-WIN-06	2	2
98003	H945-AL2R6	14	2	30103	004-PIP-06P	5	27
81349	JAN1N3957	7	5	30103	004-PIP-08P	5	4
12437	JN375NC	11	9	30103	004-THM-02P	10	5
12437	JN750NC	11	6	30103	004-THM-02P	12	1
74999	J9312	1	21	30103	004-THM-03P	3	19
94295	KA211DV2512A	6	1	30103	004-THM-03P	3	24
94295	KM5105	8	3	30103	004-THM-04P	3	18
12437	LW3755P	1t	10	30103	004-THM-04P	3	23
12431	MBU1000-14	11	27	30103	004-WSH-01P	3	32
12431	MBU625-14	11	19	30103	004-WSH-01P	3	39
96906	MS25036-153	5	23	30103	004-WSH-01P	9	3
96906	MS25036-153	6	4	30103	004-WSH-02P	3	36
96906	MS35649-264	8	16	30103	004-WSH-02P	3	45
96906	MS35649-284	6	15	30103	004-WSH-02P	5	11
96906	MS51971-3	9	16	30103	004-WSH-02P	9	7
96906	MS9468-22	1	30	30103	004-WSH-03P	5	9
94295	MV130LA2	6	12	30103	006-NUT-01P	3	37
94295	MV130LA2	8	2	30103	006-NUT-01P	3	46
81349	M55155-30-6	7	4	30103	006-NUT-01P	5	7
94295	PK4346	8	8	30103	006-NUT-01P	9	8
94295	PK4382	6	24	30103	006-PIN-02P	3	27
96195	P2030AL	5	6	30103	006-PIN-02P	3	28
59730	RA18-6	6	33	30103	006-PIN-02P	3	34
81349	RCR20G104JS	8	6	30103	006-PIN-02P	3	41
81349	RCR20G332JS	7	9	30103	006-PIN-02P	3	51
81349	RCR20G562JS	7	13	30103	006-PIN-02P	3	52
81349	RCR20G822JS	7	10	30[03	006-PIN-02P	4	1
81349	RCR20G910JS	7	12	30103	006-PIN-14P	3	43
81349	RCR42G152JS	7	1	30103	006-SPL-01A	3	7
81349	RCR42G331JS	6	6	30103	006-WIN-01A	9	1
81349	RCR42G332JS	7	11	30103	006-WIN-09A	10	2
81349	RC20GF123J	7	16	30103	007-BLT-07P	3	47
81349	RC20GF361J	7	2	30103	007-BLT-07P	4	3

## SECTION IV

TM 11-5985-362-23P

FSCM PART NUMBER		FIGURE NO.	ITEM NO.	FSCM PART NUMBER	FIGURE NO.	ITEM NO.	
30103	001-BLT-09P	3	35	87431	18-1-C	1	13
30103	007-BLT-09P	3	44	87431	18-1-C	1	a4
30103	007-BLT-09P	5	15	87431	18-1-C	1	16
30103	007-BLT-09P	9	6	87431	18-1-C	2	16
30103	007-BLT-10P	13	4	87431	18-1-C	2	25
30103	007-BLT-10P	14	4	87431	18-1-C	2	33
30103	007-REL-01A	1	26	87431	18-1-C	2	34
30103	007-REL-02A	1	27	87431	18-1-C	2	36
30103	007-REL-03A	1	28	87431	18-10-F6	2	27
30103	007-REL-04A	1	29	87431	18-4-P	2	24
30103	007-REL-05A	1	24	87431	18-4-P	2	31
30103	007-SCR-043	8	11	81431	18-4-P	2	35
30103	012-SCR-09P	8	10	87431	18-6-X	2	9
30103	012-WSH-03P	13	3	87431	18-6-X	2	23
30103	012-WSH-03P	14	3	81431	18-6-X	2	32
30103	012-WSH-08P	1	25	87431	18-6-X	3	15
30103	014-BAS-01A	1	42	87431	18-6-X	10	3
30103	014-TWR-01A	3	6	87431	18-6-X	12	4
30103	014-TWR-03A	3	13	59730	18RA-8F	8	17
30103	014-TWR-06A	3	8	30103	181-FLA-01A	2	5
30103	014-WSH-084	9	15	72971	181A	5	25
92739	014-704	7	6	30103	182-DRP-02A	2	1
30103	016-BLT-16P	1	10	76691	188-3-VG	3	11
30103	016-NUT-09P	2	14	76691	188-3-VG	3	22
30103	016-WSH-008	6	9	80131	2N5816	7	15
30103	018-PIN-01A	4	8	80131	2N5817	7	17
30103	018-WSH-003	6	6	30103	202-GUY-37A	3	2
30103	018-WSH-003	6	20	30103	206-GUY-01A	3	3
30103	018-WSH-003	8	15	89020	213	6	29
30103	018-WSH-004	6	3	30103	216-PLT-01A	2	11
30103	018-WSH-004	6	14	30103	216-PLT-02A	2	12
30103	018-WSH-004	6	27	30103	216-PLT-03A	4	6
30103	019-SLV-01A	2	7	30103	221-CAT-01A	2	2
30103	019-SLV-01A	3	16	30103	222-CAT-01A	2	6
30103	022-PIN-01A	3	42	30103	223-CAT-01A	2	20
30103	024-SCR-01P	4	4	89020	230	6	28
30103	026-CTL-01P	5	28	98003	2as-35-VHCS	13	1
30103	027-WSH-01P	4	5	98003	250-35-VHCS	14	1
30103	029-BLT-03P	5	8	30103	277-RAD-01A	2	3
30103	030-ANC-02A	1	9	30103	278-RAD-01A	2	4
30103	031-CTL-01P	5	20	79577	2902-3/8	12	3
30103	034-CTL-01P	6	25	82240	3	15	1
30103	035-CTL-01P	6	23	30103	305-GUY-01A	3	4
30874	0356742	8	14	30103	305-GUY-02A	3	5
30103	038-BAR-01A	1	18	30103	360-PLT-01A	3	9
30103	038-SPC-01A	6	22	30103	360-PLT-03A	3	38
30103	038-SPC-01A	7	7	30103	360-PLT-04A	3	30
00853	052HJ101W150B	6	22	30103	360-PLT-05A	3	29
30103	056-BDL-01A	1	23	08325	360Z	1	34
30103	063-CLA-01A	1	12	30103	368-PLT-01A	4	11
30103	063-CLA-01A	2	10	30103	369-PLT-01A	3	1
30103	078-BAS-01A	1	41	30103	370-PLT-01A	3	12
30103	078-BAS-02A	9	12	30103	397-PLT-01P	3	48
30103	078-BAS-03A	9	5	30103	397-PLT-01P	13	8
30103	078-BAS-04A	9	13	30103	397-PLT-01P	14	7
30103	078-BAS-05A	9	11	30103	399-PLT-01P	3	49
30103	078-BAS-06A	9	9	30103	400-PLT-01P	14	6
30103	078-BAS-07A	9	10	30103	401-PLT-01P	13	1
30103	079-BAS-01A	3	11	30103	402-PLT-01P	15	2
30103	080-MOD-01A	1	8	30103	418-PLT-01P	13	6
30103	086-CLA-01A	2	17	12437	4441	10	1
30103	086-CLA-01A	2	26	30103	461-ASY-01A	3	10
30103	087-INS-01A	4	10	30103	461-ASY-01A	3	50
30103	087-SPC-01A	4	7	44655	4642	7	3
30103	088-INS-01A	4	9	30103	470-ASY-01A	1	1
30103	092-B0X-01A	1	40	24863	51003	1	32
12360	1/4-20	5	10	71183	5200-B	5	22
s1833	1006T	8	13	30103	527-BKT-01A	5	12
24446	116A21/TS	5	2	30103	527-BKT-02A	5	19
30103	124-WIR-01A	1	5	71785	548	6	17
30103	124-WIR-02A	1	3	59730	54715	2	18
30103	124-WIR-03A	1	4	59730	54715	3	21
30103	124-WIR-04A	1	11	59730	54715	3	26
30103	124-WIR-04A	1	15	75382	599-2004-2	6	18
30103	123-WIR-04A	1	17	53800	6KV62412	12	7
59730	142AL-1/2	5	24	59730	601AL	5	26
59730	142AL-3/4	5	5	74368	602MODIFIED	2	8
96652	1610-0091-01875	1	31	00502	676-3-15FR	5	17
75347	1613-30	10	4	81982	676-3-6FR	5	18
75347	1613-30	2	5	72962	68NE-066	4	2

**SECTION IV**

**TM11-5985-362-23P**

<b>FSCM</b>	<b>PART NUMBER</b>	<b>FIGURE NO.</b>	<b>ITEM NO.</b>	<b>FSCM</b>	<b>PART NUMBER</b>	<b>FIGURE NO.</b>	<b>ITEM NO.</b>
72962	68NE-066	5	13	72962	68NE-066	14	5
72962	68NE-066	13	5	06540	9230-A-171	6	21

By Order of the Secretary of the Army:

JOHN A. WICKMAN JR.  
*General, United States Army*  
*Chief of Staff*

Official:


ROBERT M. JOYCE  
*Major General, United States Army*  
*The Adjutant General*

DISTRIBUTION:

To be distributed in accordance with DA Form 12-51 requirements for AN/TSC-26.

☆U.S. GOVERNMENT PRINTING OFFICE: 1984-705-046/4175

RECOMMENDED CHANGES TO EQUIPMENT TECHNICAL PUBLICATIONS



THEN... JOT DOWN THE DOPE ABOUT IT ON THIS FORM, CAREFULLY TEAR IT OUT, FOLD IT AND DROP IT IN THE MAIL!

## SOMETHING WRONG WITH THIS PUBLICATION?

FROM: (PRINT YOUR UNIT'S COMPLETE ADDRESS)

---

DATE SENT

PUBLICATION NUMBER

TM 11-5825-270-10

PUBLICATION DATE

23 Jul 81

PUBLICATION TITLE

Radio Frequency R-2176/FRN

BE EXACT... PIN-POINT WHERE IT IS				IN THIS SPACE TELL WHAT IS WRONG AND WHAT SHOULD BE DONE ABOUT IT:
PAGE NO.	PARA-GRAPH	FIGURE NO.	TABLE NO.	

PRINTED NAME, GRADE OR TITLE, AND TELEPHONE NUMBER

SIGN HERE:

TEAR ALONG PERFORATED LINE

DA FORM 2028-2  
1 JUL 79

PREVIOUS EDITIONS ARE OBSOLETE.

P.S.—IF YOUR OUTFIT WANTS TO KNOW ABOUT YOUR RECOMMENDATION MAKE A CARBON COPY OF THIS AND GIVE IT TO YOUR HEADQUARTERS.

